

Bessie Wind: Introduction

Peace River Regional District

July 17, 2025

INNERGEX



Steve Cloutier
Manager –
Wind Energy



About Innergex

A 100% renewable energy company

Projects include solar, run-of-river hydro, wind, battery energy storage.

Understanding of the Canadian context

Canadian renewable energy company, active since 1990.

Long-term owner operator

Taking projects all the way through from development to construction and operations means we are invested in building long-term lasting relationships with local communities.

Strong and diverse global portfolio

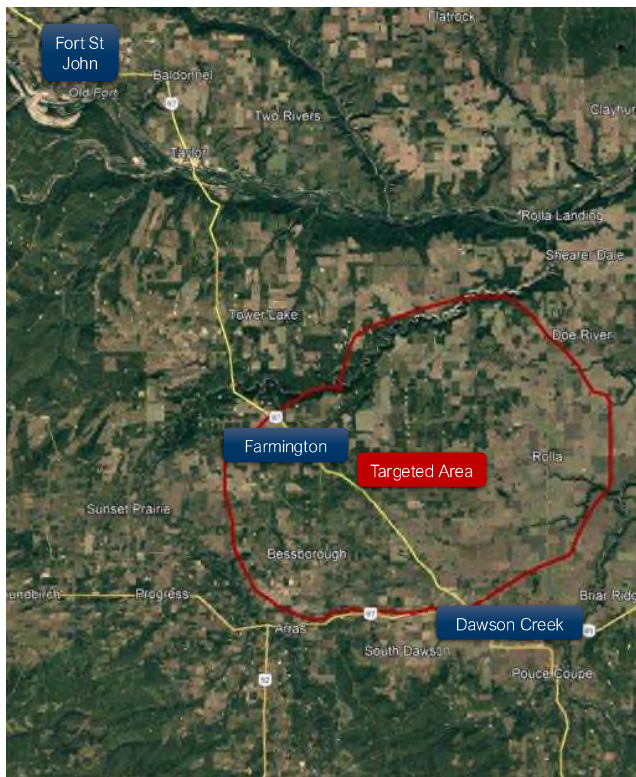
91 Operational facilities across Canada, USA, Chile and France, representing 4,693 MW gross capacity.

A long history of mutually beneficial collaboration and partnership with local communities

Examples include equity agreements, royalties, capacity funding, and annual contributions. We are always committed to clear and transparent dialogue.



Innergex: Dokie Wind Farm (BC)



Project Area and Current Status



- Located northwest of Dawson Creek.
- Falls within Electoral Area D, will be compliant with local zoning and official community plan.
- Consistent with Dawson Creek LRMP area. Overlaps with the Agricultural Land Reserve.
- We will also work to align the proposed project with the PRRD Regional Board Wind Energy Generation Project Policy, dated February 16, 2017.
- The Project will be optimized as we move through the development phase. This outline represents a greater area than the actual project footprint.

3



The Project



Located on Private Lands:
Footprint will change as land agreements progress

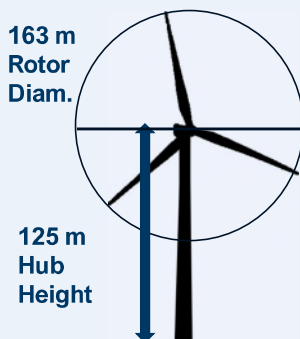


Partners:
To be determined

- **Between 25 to 45 turbines:**
- each ~6 MW
- **Positioned > 600m from dwellings**
- Considerations health and safety, sound monitoring & wildlife.



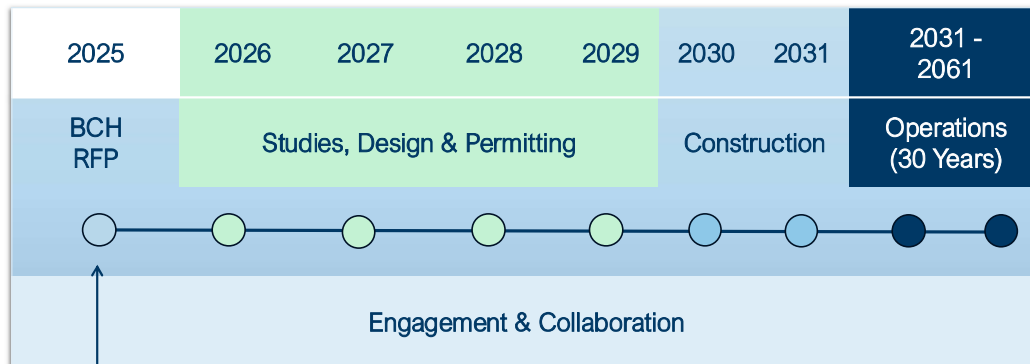
**163 m
Rotor
Diam.**



**125 m
Hub
Height**

4

Proposed Project Schedule



We are here. Developing the project in advance of the 2025 BC Hydro RFP.

INNERGEX

5

Local and Regional Business Opportunities



6

Interests for Local Governments

- Permitting & Right-of-Ways
 - Some collectors lines on public right-of-ways.
 - Transmission lines may pass across public right-of-ways.
- Decommissioning, Disposal, and Waste Considerations
 - Area returned to substantially the same condition as existed prior to commencement.
 - Reuse or recycling of materials would be prioritized over disposal.
 - Leader in supporting innovation to reduce waste impacts from wind farm decommissioning, such as efforts from the Circular Innovation Challenge
- Taxable benefits
 - Estimate of \$200k per year in municipal property taxes.
 - Estimate of \$20M+ in payments to landowners over the life of the project.

INNERGEX

7

Questions?



Please reach out with any further questions or comments!

Mike Goodman

Senior Development Manager
c: (778) 222-2839
e: mgoodman@innergex.com

Adeline Thames

Development Associate
c: (778) 888-0107
e: athames@innergex.com