



PRRD - Broadband Internet and Mobility

Peace Region Internet Society

1

What is PRiS?

Peace Region Internet Society (PRiS)

- PRiS is a non-profit internet service provider, formed in 1994.
- We are owned by our membership, which includes residents throughout the Peace Region of British Columbia and Saddle Hills County, Alberta.
- As a non-profit, all revenues are re-invested directly into our network to improve service quality and support for our members.

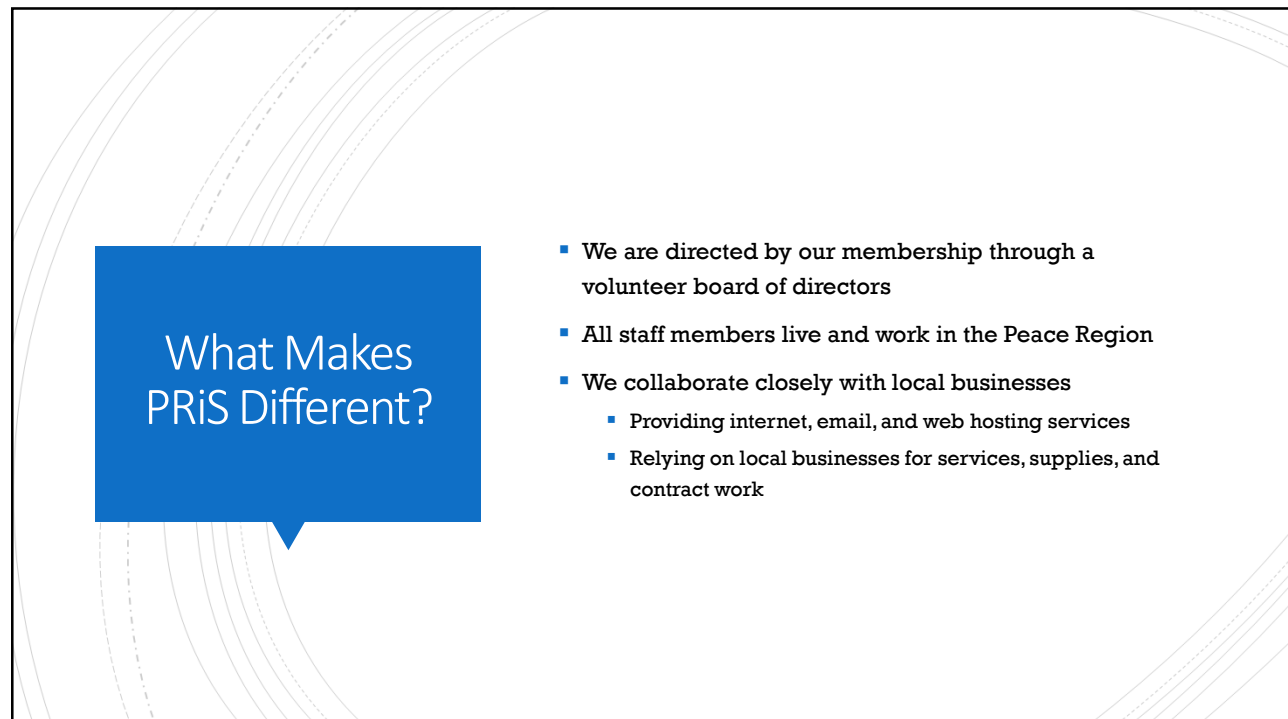
2

The slide features a light gray background with faint, curved, concentric lines. On the left, there is a blue speech bubble pointing downwards. The text 'Our Mission' is centered within this bubble. To the right of the bubble, a single bullet point is listed.

Our Mission

- To provide high-quality, affordable internet access to residents and businesses in the Peace Region, bridging the digital divide and supporting community growth, education, and economic development.

3

The slide features a light gray background with faint, curved, concentric lines. On the left, there is a blue speech bubble pointing downwards. The text 'What Makes PRiS Different?' is centered within this bubble. To the right of the bubble, a list of four bullet points is presented.

What Makes PRiS Different?

- We are directed by our membership through a volunteer board of directors
- All staff members live and work in the Peace Region
- We collaborate closely with local businesses
 - Providing internet, email, and web hosting services
 - Relying on local businesses for services, supplies, and contract work

4

What Makes PRiS Different?

- No contracts
 - All plans are month-to-month with no long-term commitments
- No hidden fees, upsells, or required deposits
- Hardware is included at no extra cost
 - Equipment is kept up to date — no extra fees
 - WiFi routers are provided and fully supported
- No deposits required to get services

5

What Makes PRiS Different?

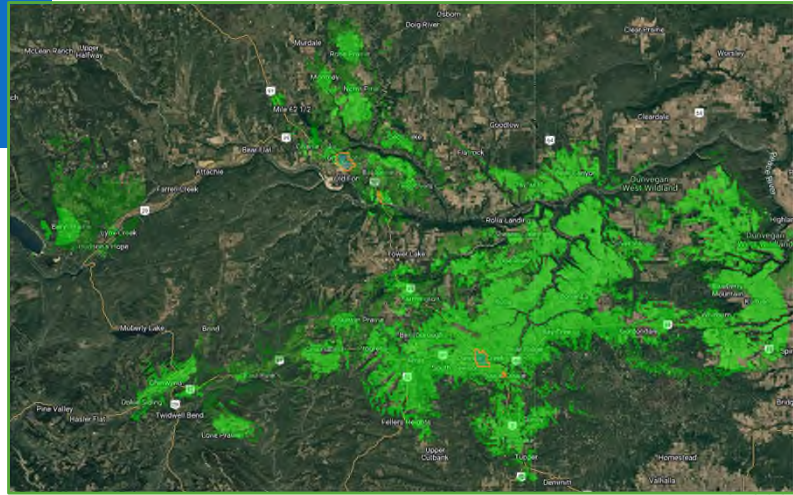
- Install costs are affordable
 - Standard residential install rate is \$149 for rural service
 - No surprises or hidden fees
- Service guarantee:
 - Full refund available within the first 30 days
- Technical Support and Call Outs
 - Helpdesk is done by local technicians
 - Service calls are done within 1-2 business days, sometimes the same day.

6

Our Service Area

Communities served:

Dawson Creek
Fort St. John
Chetwynd
Pouce Coupe
Tomslake
Progress
Rose Prairie
Arras
North Pine
Lone Prairie
Clayhurst
Montney
And many, many more...



A lot of places!

7

What kinds of services does PRiS Provide?

- **Rural Wireless**
 - The majority of our members connect through our rural wireless network
 - Service reaches farms, acreages, and remote households throughout the Peace Region
- **Cable Services**
 - Resell DOCIS cable based services for members in Dawson Creek, Fort St. John, Taylor and Pouce Coupe.
 - Providing a similar service to our members, but at an affordable monthly cost – no contracts or hidden fees.
- **Urban Wireless**
 - Internet access for in-town locations where other providers fall short
 - Tailored for members in areas with poor or inconsistent service

8



Our Challenges

- **Lack of Fibre Access**
 - Fibre infrastructure is unavailable in many of the areas we serve
 - Where fibre is present, gaining access is often cost-prohibitive due to high transport fees, expensive buildout requirements, and ongoing monthly charges set by major telecom providers
 - These costs make it fiscally unworkable for a non-profit provider to sustainably deliver service using existing fibre networks
- **Regulatory and Licensing Barriers**
 - Accessing licensed spectrum or gaining approvals can delay projects

9



Our Challenges

- **Small membership base**
 - Economies of scale, high costs to provide services to low density areas
 - Aggressive marketing by incumbents to specific members

10

New Projects for 2025

- Briar Ridge/Rolla Upgrades
 - Download Speeds upgraded to 200Mbps
 - 36 Homes Upgraded, Approx. 250 km2 of coverage
 - Completed June 2025
- North Pine Upgrade
 - New Download Speeds up to 200Mbps
 - 45 Homes to be Upgraded, Approx. 100 km2 of coverage
 - Scheduled for Completion August 2025
- Bear Mountain/Arras Upgrades
 - New Download Speeds up to 200Mbps
 - 67 Homes to be Upgraded, approx. 550 km2 of coverage
 - Scheduled for Completion September 2025

11

Thank you!

We appreciate the PRRD's continued support.

12