

PEACE RIVER REGIONAL DISTRICT

Bylaw No. 995, 1995

A bylaw to establish a Local service to provide for the construction, operation and maintenance of a leisure pool on behalf of the City of Fort St. John, Electoral Area C and a defined portion of Electoral Area B

WHEREAS the Regional Board of the Peace River Regional District may, by bylaw, establish and operate a local service under the provisions of the *Local Government Act*;

AND WHEREAS the Board wishes to establish a local service to provide for the construction, operation and maintenance of a leisure pool for the benefit of the residents of the local service area;

AND WHEREAS the assent of the electors has been obtained within the participating areas of the City of Fort St. John, Electoral Area "C" and the defined portion of Electoral Area "B";

NOW THEREFORE the Board of the Peace River Regional District, in open meeting assembled, enacts as follows:

Service Being Established

1. The local service hereby established under this by-law and to be operated is a leisure pool, being a structure which comprises, but is not limited to, a wave pool, lane pool and diving board, sauna, soaking pool, water slides, other aquatic activities, and ancillary services, hereinafter known as the "North Peace Leisure Pool Service".

Service Area Boundaries

2. The Service Area for the North Peace Leisure Pool Service is the City of Fort St. John in its entirety, Electoral Area C in its entirety, and a defined portion of Electoral Area B in its entirety; further, the service area within Electoral Area B is split into two parts – Zone 1 and Zone 2, as described below and shown on the map attached hereto as Schedule A – Service Area Boundary.
 - a. In Zone 1 of Electoral Area B, all properties are within the Service Area Boundary.
 - b. In Zone 2 of Electoral Area B, the list of residential properties described by folio and legal description in Schedule **B** are removed from the service area boundary and exempted from taxation for the purpose of the North Peace Leisure Pool Service.

Participating Areas

3. The participants in the local service, established under Section 1, are the City of Fort St. John, Electoral Area "C" and Electoral Area "B".

Cost Recovery

4. The annual cost of providing the Service within the service area boundary as defined in Part 2 – Service Area Boundaries, and shown on Schedule A, shall be recovered by one of more of the following:
 - a) A property value tax imposed pursuant to the provisions of the *Local Government Act*, levied against the net taxable value of improvements only;
 - b) Revenues raised by other means authorized by the *Local Government Act*, or another Act;
 - c) Revenues raised by way of agreement, enterprise, gift, grant, or otherwise.

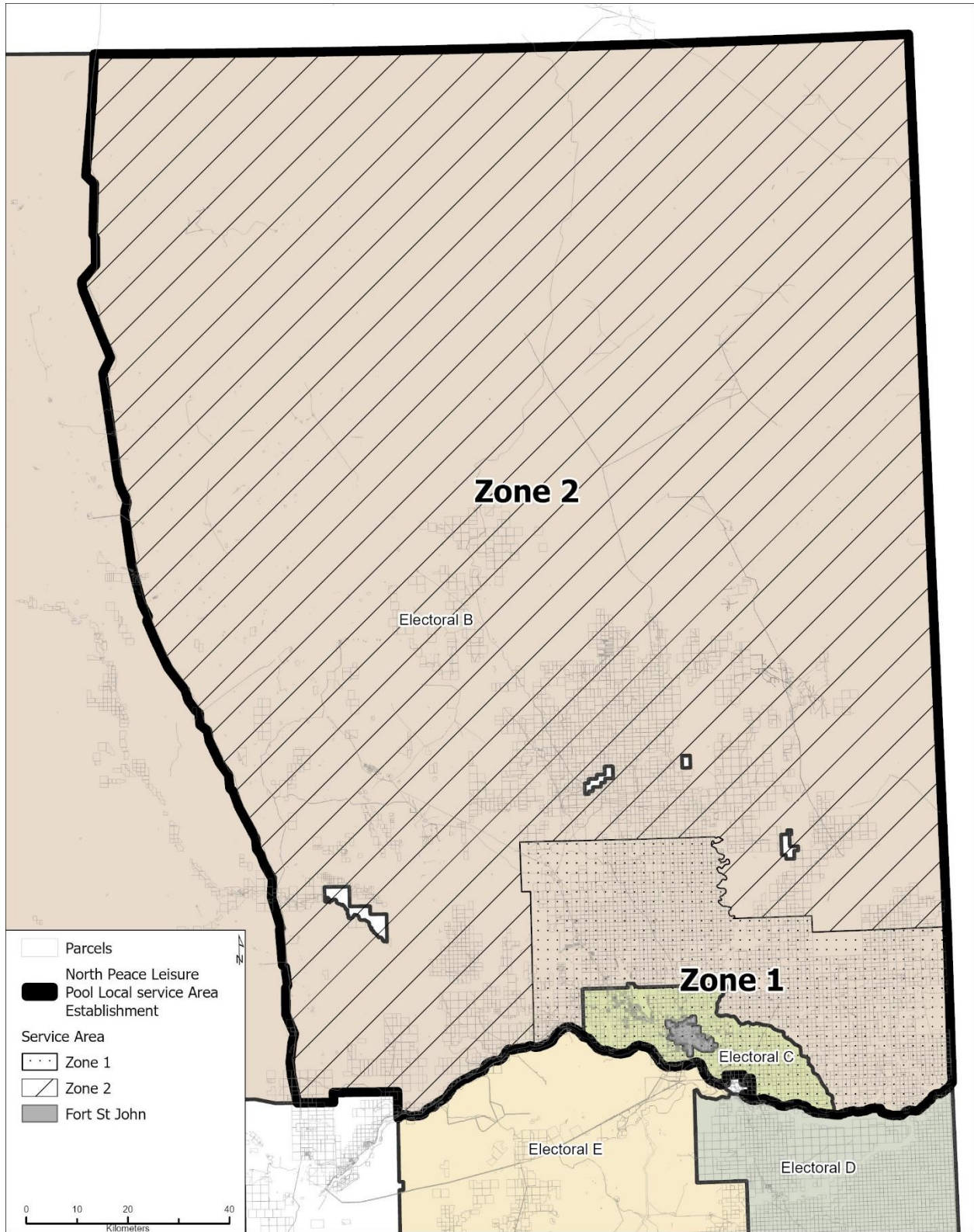
Requisition

5. The maximum that may be requisitioned in any one year for the service is the amount that could be raised by a property value tax of **\$1.30/\$1,000** when applied to the net taxable value of land and improvements in the service area.

General Provisions

6. This bylaw may be cited as “North Peace Leisure Pool Local Service Area Establishment Bylaw No. 995, 1995”.
7. Schedule A – Service Area Boundary is attached to and forms part of this bylaw.
8. Schedule B - Exempted Residential Properties – Zone 2 Of Electoral Area B is attached to and forms part of this bylaw
9. If any portion of this bylaw is declared invalid by a court, the invalid portion shall be severed and the remainder of the bylaw is deemed valid.
10. The headings used in this bylaw are for convenience only and do not form part of this bylaw, and are not to be used in the interpretation of this bylaw.
11. Any enactment referred to herein is a reference to an enactment of the Province of British Columbia and regulations thereto, as amended, revised, consolidated, or replaced from time to time.

SCHEDULE A – NORTH PEACE LEISURE POOL SERVICE AREA BOUNDARY



2022-07-06

G:\Service_Areas\North_Peace_Leisure_Pool\North_Peace_Leisure_Pool_Map\North_Peace_Leisure_Pool_Map.aprx

SCHEDULE B – EXEMPTED RESIDENTIAL PROPERTIES – ZONE 2 OF ELECTORAL AREA B

Folio Number	Legal Description
760-001205.000	THE SOUTH WEST 1/4 OF SECTION 3 TOWNSHIP 110 PEACE RIVER DISTRICT
760-001211.000	SECTION 6 TOWNSHIP 110 PEACE RIVER DISTRICT, EXCEPT PLAN 23895
760-001224.100	LOT A SECTION 12 TOWNSHIP 110 PEACE RIVER DISTRICT PLAN PGP37454
760-001234.000	THE NORTH WEST 1/4 OF SECTION 16 TOWNSHIP 110 PEACE RIVER DISTRICT
760-001235.000	THE SOUTH EAST 1/4 OF SECTION 16 TOWNSHIP 110 PEACE RIVER DISTRICT EXCEPT THE MOST SOUTHERLY 25 METRES IN PARALLEL WIDTH THEREOF
760-001237.000	THE NORTH EAST 1/4 OF SECTION 17 TOWNSHIP 110 PEACE RIVER DISTRICT
760-001242.000	THE NORTH 1/2 OF SECTION 19 TOWNSHIP 110 PEACE RIVER DISTRICT, EXCEPT PLANS 19983, 23895 AND 28223
760-001267.000	THE NORTH EAST 1/4 OF SECTION 8 TOWNSHIP 111 PEACE RIVER DISTRICT
760-001292.000	SECTION 20 TOWNSHIP 111 PEACE RIVER DISTRICT
760-001312.050	THE FRACTIONAL WEST 1/2 OF SECTION 31 TOWNSHIP 111 PEACE RIVER DISTRICT EXCEPT PLAN 23895
760-001314.000	THE WEST 1/2 OF SECTION 32 TOWNSHIP 111 PEACE RIVER DISTRICT, EXCEPT THE NORTH 66 FEET AND PLAN 21425
760-001317.000	THE NORTH EAST 1/4 OF SECTION 33 TOWNSHIP 111 PEACE RIVER DISTRICT
760-001319.500	BLOCK A OF SECTION 34 TOWNSHIP 111 PEACE RIVER DISTRICT
760-001324.100	THE SOUTH EAST 1/4 OF SECTION 35 TOWNSHIP 111 PEACE RIVER DISTRICT EXCEPT PART IN PLAN EPP35645
760-001351.000	THE WEST 1/2 OF SECTION 4 TOWNSHIP 112 PEACE RIVER DISTRICT
760-001374.000	THE SOUTH WEST 1/4 OF SECTION 17 TOWNSHIP 112 PEACE RIVER DISTRICT, EXCEPT THE MOST WESTERLY AND NORTHERLY 80 FEET
760-001435.000	THE NORTH WEST 1/4 OF SECTION 18 TOWNSHIP 113 PEACE RIVER DISTRICT
760-001452.150	LOT 1 SECTION 25 TOWNSHIP 113 WEST OF THE 6TH MERIDIAN PEACE RIVER DISTRICT PLAN PGP37451
760-001469.000	THE SOUTH 1/2 OF SECTION 31 TOWNSHIP 113 PEACE RIVER DISTRICT
760-001515.100	PARCEL A (R6260) SECTION 17 TOWNSHIP 115 PEACE RIVER DISTRICT
760-001538.001	SECTION 12 TOWNSHIP 117 PEACE RIVER DISTRICT
760-003474.115	THE SOUTH WEST 1/4 OF SECTION 10 TOWNSHIP 86 RANGE 14 WEST OF THE 6TH MERIDIAN PEACE RIVER DISTRICT, EXCEPT THE MOST WESTERLY 80 FEET IN PARALLEL WIDTH THEREOF
760-004788.500	LOT 4 SECTION 12 TOWNSHIP 86 RANGE 15 WEST OF THE 6TH MERIDIAN PEACE RIVER DISTRICT PLAN EPP51156
760-004808.250	LOT 1 SECTION 19 TOWNSHIP 87 RANGE 15 WEST OF THE 6TH MERIDIAN PEACE RIVER DISTRICT PLAN EPP21802
760-004823.000	THE SOUTH WEST 1/4 OF SECTION 31 TOWNSHIP 87 RANGE 15 WEST OF THE 6TH MERIDIAN PEACE RIVER DISTRICT EXCEPT PLAN PGP36223
760-004846.010	PARCEL B (R3369) OF SECTION 4 TOWNSHIP 88 RANGE 15 WEST OF THE 6TH MERIDIAN PEACE RIVER DISTRICT
760-004850.001	BLOCK A OF THE NORTHEAST 1/4 SECTION 6 TOWNSHIP 88 RANGE 15 WEST OF THE 6TH MERIDIAN PEACE RIVER
760-007307.000	SECTION 9, TOWNSHIP 88, RANGE 17, MERIDIAN W6, PEACE RIVER LAND DISTRICT, EXC WLY 25 M SUBJECT TO STAT SRW PGP39329

Folio Number	Legal Description
760-004851.000	THE NORTH WEST 1/4 OF SECTION 6 TOWNSHIP 88 RANGE 15 WEST OF THE 6TH MERIDIAN PEACE RIVER DISTRICT
760-004852.000	THE SOUTH EAST 1/4 OF SECTION 6 TOWNSHIP 88 RANGE 15 WEST OF THE 6TH MERIDIAN PEACE RIVER DISTRICT
760-004853.000	THE SOUTH WEST 1/4 OF SECTION 6 TOWNSHIP 88 RANGE 15 WEST OF THE 6TH MERIDIAN PEACE RIVER DISTRICT EXCEPT PLAN 33656
760-004859.000	SECTION 9 TOWNSHIP 88 RANGE 15 WEST OF THE 6TH MERIDIAN PEACE RIVER DISTRICT
760-004864.000	THE WEST 1/2 OF SECTION 18 TOWNSHIP 88 RANGE 15 WEST OF THE 6TH MERIDIAN PEACE RIVER DISTRICT EXCEPT PLAN PGP36838
760-004866.200	THE SOUTH WEST 1/4 OF SECTION 19 TOWNSHIP 88 RANGE 15 WEST OF THE 6TH MERIDIAN PEACE RIVER DISTRICT, EXCEPT THE MOST SOUTHERLY 80 FEET IN PARALLEL WIDTH THEREOF
760-005855.000	SECTION 30 TOWNSHIP 86 RANGE 16 WEST OF THE 6TH MERIDIAN PEACE RIVER DISTRICT
760-005855.101	BLOCK A OF THE NORTH EAST 1/4 OF SECTION 31 TOWNSHIP 86 RANGE 16 WEST OF THE 6TH MERIDIAN PEACE RIVER DISTRICT
760-005873.001	THE EAST 1/2 OF SECTION 2 TOWNSHIP 87 RANGE 16 WEST OF THE 6TH MERIDIAN PEACE RIVER DISTRICT EXCEPT THE MOST SOUTHERLY 80 FEET IN PARALLEL WIDTH THEREOF
760-005881.000	BLOCK A OF THE SOUTH EAST 1/4 OF SECTION 8 TOWNSHIP 87 RANGE 16 WEST OF THE 6 MERIDIAN PEACE RIVER DISTRICT
760-005895.000	LEGAL SUBDIVISION 5 OF SECTION 25 TOWNSHIP 87 RANGE 16 WEST OF THE 6TH MERIDIAN PEACE RIVER DISTRICT
760-005902.000	THE EAST 1/2 OF THE NORTH WEST 1/4 OF SECTION 36 TOWNSHIP 87 RANGE 16 WEST OF THE 6TH MERIDIAN PEACE RIVER DISTRICT EXCEPT PLAN PGP35109
760-005913.000	THE NORTH EAST 1/4 OF SECTION 1 TOWNSHIP 88 RANGE 16 WEST OF THE 6TH MERIDIAN PEACE RIVER DISTRICT
760-005921.000	THE SOUTH EAST 1/4 OF SECTION 12 TOWNSHIP 88 RANGE 16 WEST OF THE 6TH MERIDIAN PEACE RIVER DISTRICT
760-005923.000	THE EAST 1/2 OF SECTION 13 TOWNSHIP 88 RANGE 16 WEST OF THE 6TH MERIDIAN PEACE RIVER DISTRICT
760-007249.000	THE SOUTH EAST 1/4 OF SECTION 14 TOWNSHIP 86 RANGE 17 WEST OF THE 6TH MERIDIAN PEACE RIVER DISTRICT
760-007274.000	THAT PART OF THE FRACTIONAL SOUTH WEST 1/4 SECTION 19 TOWNSHIP 87 RANGE 17 WEST OF THE SIXTH MERIDIAN PEACE RIVER DISTRICT LYING SOUTH AND EAST OF THE BEATTON RIVER
760-007280.000	THE NORTH WEST 1/4 OF SECTION 29, EXCEPT PART IN PLAN BCP7353 TOWNSHIP 87 RANGE 17 WEST OF THE 6TH MERIDIAN PEACE RIVER DISTRICT
760-007287.000	SECTION 35 TOWNSHIP 87 RANGE 17 WEST OF THE 6TH MERIDIAN PEACE RIVER DISTRICT EXCEPT PLAN PGP36891
760-007299.000	SECTION 2 TOWNSHIP 88 RANGE 17 WEST OF THE 6TH MERIDIAN PEACE RIVER DISTRICT
760-007306.100	THE WEST 1/2 OF SECTION 8 TOWNSHIP 88 RANGE 17 WEST OF THE 6TH MERIDIAN PEACE RIVER DISTRICT

Folio Number	Legal Description
760-007319.000	THE EAST 1/2 OF SECTION 20 TOWNSHIP 88 RANGE 17 WEST OF THE SIXTH MERIDIAN PEACE RIVER DISTRICT
760-007322.000	THE SOUTH EAST 1/4 OF SECTION 21 TOWNSHIP 88 RANGE 17 WEST OF THE SIXTH MERIDIAN PEACE RIVER DISTRICT
760-007323.000	THE SOUTH WEST 1/4 OF SECTION 21 TOWNSHIP 88 RANGE 17 WEST OF THE SIXTH MERIDIAN PEACE RIVER DISTRICT
760-007328.000	THE WEST 1/2 OF SECTION 26 TOWNSHIP 88 RANGE 17 WEST OF THE 6TH MERIDIAN PEACE RIVER DISTRICT
760-007335.000	THE FRACTIONAL SECTION 33 TOWNSHIP 88 RANGE 17 WEST OF THE 6TH MERIDIAN PEACE RIVER DISTRICT
760-007336.000	THE FRACTIONAL SECTION 34 TOWNSHIP 88 RANGE 17 WEST OF THE SIXTH MERIDIAN EXCEPT PORTIONS IN PLANS PGP39272 AND BCP29828 PEACE RIVER DISTRICT
760-009226.000	THE SOUTH WEST 1/4 OF SECTION 2 TOWNSHIP 88 RANGE 18 WEST OF THE 6TH MERIDIAN PEACE RIVER DISTRICT
760-009227.000	THE NORTH EAST 1/4 OF SECTION 3 TOWNSHIP 88 RANGE 18 WEST OF THE 6TH MERIDIAN PEACE RIVER DISTRICT
760-009228.005	THE SOUTH WEST 1/4 OF SECTION 3 TOWNSHIP 88 RANGE 18 WEST OF THE 6TH MERIDIAN PEACE RIVER DISTRICT
760-009232.000	THE SOUTH EAST 1/4 OF SECTION 4 TOWNSHIP 88 RANGE 18 WEST OF THE 6TH MERIDIAN PEACE RIVER DISTRICT EXCEPT PLAN 33121
760-009235.000	THE SOUTH EAST 1/4 OF SECTION 5 TOWNSHIP 88 RANGE 18 WEST OF THE 6TH MERIDIAN PEACE RIVER DISTRICT
760-009235.050	THE NORTH EAST 1/4 OF SECTION OF 5 TOWNSHIP 88 RANGE 18 WEST OF THE 6TH MERIDIAN PEACE RIVER DISTRICT
760-009236.000	THE SOUTH WEST 1/4 OF SECTION 5 TOWNSHIP 88 RANGE 18 WEST OF THE 6TH MERIDIAN PEACE RIVER DISTRICT
760-009245.000	EAST 1/2 OF SECTION 10 TOWNSHIP 88 RANGE 18 WEST OF THE 6TH MERIDIAN PEACE RIVER DISTRICT
760-009261.000	THE NORTH WEST 1/4 OF SECTION 16 TOWNSHIP 88 RANGE 18 WEST OF THE 6TH MERIDIAN PEACE RIVER DISTRICT
760-009263.005	PARCEL A (P4308) OF SECTION 16 TOWNSHIP 88 RANGE 18 WEST OF THE 6TH MERIDIAN PEACE RIVER DISTRICT
760-009269.000	THE NORTH 1/2 OF SECTION 20 TOWNSHIP 88 RANGE 18 WEST OF THE 6TH MERIDIAN PEACE RIVER DISTRICT
760-009272.000	THE NORTH WEST 1/4 OF SECTION 21 TOWNSHIP 88 RANGE 18 WEST OF THE 6TH MERIDIAN PEACE RIVER DISTRICT
760-009274.000	THE SOUTH WEST 1/4 OF SECTION 21 TOWNSHIP 88 RANGE 18 WEST OF THE 6TH MERIDIAN PEACE RIVER DISTRICT EXCEPT PLANS 18867 AND 23828
760-009278.000	PARCEL A (N32516) OF THE NORTH WEST 1/4 OF SECTION 22 TOWNSHIP 88 RANGE 18 WEST OF THE 6TH MERIDIAN PEACE RIVER DISTRICT
760-009285.000	THE FRACTIONAL NORTH WEST 1/4 OF SECTION 24 TOWNSHIP 88 RANGE 18 WEST OF THE 6TH MERIDIAN PEACE RIVER DISTRICT
760-009289.000	BLOCK A OF SECTION 26 TOWNSHIP 88 RANGE 18 WEST OF THE 6TH MERIDIAN PEACE RIVER DISTRICT

Folio Number	Legal Description
760-009292.000	THE SOUTH WEST 1/4 OF SECTION 27 TOWNSHIP 88 RANGE 18 WEST OF THE 6TH MERIDIAN PEACE RIVER DISTRICT, EXCEPT THE MOST SOUTHERLY AND WESTERLY 14 FEET IN PARALLEL WIDTH THEREOF
760-009300.000	SECTION 30 TOWNSHIP 88 RANGE 18 WEST OF THE 6TH MERIDIAN PEACE RIVER DISTRICT
760-009301.000	THE FRACTIONAL NORTH EAST 1/4 OF SECTION 31 TOWNSHIP 88 RANGE 18 WEST OF THE 6TH MERIDIAN PEACE RIVER DISTRICT
760-011063.000	THE NORTH EAST 1/4 OF SECTION 2 TOWNSHIP 88 RANGE 19 WEST OF THE 6TH MERIDIAN PEACE RIVER DISTRICT
760-011070.100	LOT 1 SECTION 4 TOWNSHIP 88 RANGE 19 WEST OF THE 6TH MERIDIAN PEACE RIVER DISTRICT PLAN EPP46139
760-011081.000	THE SOUTH 1/2 OF SECTION 10 TOWNSHIP 88 RANGE 19 WEST OF THE 6TH MERIDIAN PEACE RIVER DISTRICT, EXCEPT THE MOST WEST 33 FEET
760-011084.101	THE NORTH EAST 1/4 OF SECTION 12 TOWNSHIP 88 RANGE 19 WEST OF THE 6TH MERIDIAN PEACE RIVER DISTRICT
760-011094.000	PARCEL A (P18421) OF THE SOUTH WEST 1/4 OF SECTION 15 TOWNSHIP 88 RANGE 19 WEST OF THE 6TH MERIDIAN PEACE RIVER DISTRICT
760-011095.001	THE NORTH EAST 1/4 OF SECTION 16 TOWNSHIP 88 RANGE 19 WEST OF THE 6TH MERIDIAN PEACE RIVER DISTRICT
760-011106.000	THE NORTH EAST 1/4 OF SECTION 21 TOWNSHIP 88 RANGE 19 WEST OF THE 6TH MERIDIAN PEACE RIVER DISTRICT
760-011109.000	THE NORTH EAST 1/4 OF SECTION 22 TOWNSHIP 88 RANGE 19 WEST OF THE 6TH MERIDIAN PEACE RIVER DISTRICT
760-011110.000	THE WEST 1/2 OF SECTION 22 TOWNSHIP 88 RANGE 19 WEST OF THE 6TH MERIDIAN PEACE RIVER DISTRICT
760-011115.000	THE NORTH EAST 1/4 OF SECTION 24 TOWNSHIP 88 RANGE 19 WEST OF THE 6TH MERIDIAN PEACE RIVER DISTRICT
760-011116.000	THE NORTH WEST 1/4 OF SECTION 24 TOWNSHIP 88 RANGE 19 WEST OF THE 6TH MERIDIAN PEACE RIVER DISTRICT
760-011121.000	THE SOUTH WEST 1/4 OF SECTION 25 TOWNSHIP 88 RANGE 19 WEST OF THE 6TH MERIDIAN PEACE RIVER DISTRICT
760-011122.000	SECTION 26 TOWNSHIP 88 RANGE 19 WEST OF THE 6TH MERIDIAN PEACE RIVER DISTRICT
760-011126.000	THE NORTH WEST 1/4 OF SECTION 27 TOWNSHIP 88 RANGE 19 WEST OF THE 6TH MERIDIAN PEACE RIVER DISTRICT, EXCEPT THE MOST WESTERLY 4.883 METRES IN PARALLEL WIDTH THEREOF
760-011133.000	THE NORTH 1/2 OF THE NORTH 1/2 OF SECTION 30 TOWNSHIP 88 RANGE 19 WEST OF THE 6TH MERIDIAN PEACE RIVER DISTRICT
760-011137.000	THE FRACTIONAL NORTH 1/2 OF SECTION 33 TOWNSHIP 88 RANGE 19 WEST OF THE 6TH MERIDIAN PEACE RIVER DISTRICT EXCEPT PLANS PGP35757 AND BCP19506
760-011847.000	SECTION 27 TOWNSHIP 88 RANGE 20 WEST OF THE 6TH MERIDIAN PEACE RIVER DISTRICT
760-011850.000	SECTION 30 TOWNSHIP 88 RANGE 20 WEST OF THE SIXTH MERIDIAN PEACE RIVER DISTRICT
760-012109.000	THE SOUTH WEST 1/4 OF SECTION 9 TOWNSHIP 88 RANGE 21 WEST OF THE 6TH MERIDIAN PEACE RIVER DISTRICT
760-012113.000	THE NORTH WEST 1/4 OF SECTION 22 TOWNSHIP 88 RANGE 21 WEST OF THE 6TH MERIDIAN PEACE RIVER DISTRICT, EXCEPT THE WEST 80 FEET

Folio Number	Legal Description
760-012119.000	PARCEL A SECTION 25 TOWNSHIP 88 RANGE 21 WEST OF THE 6TH MERIDIAN PEACE RIVER DISTRICT PLAN PGP36305
760-012128.000	THE NORTH 1/2 OF SECTION 30 TOWNSHIP 88 RANGE 21 WEST OF THE 6TH MERIDIAN PEACE RIVER DISTRICT EXCEPT THE MOST WESTERLY 25 METRES IN PARALLEL WIDTH THEREOF
760-012129.000	THE SOUTH 1/2 OF SECTION 30 TOWNSHIP 88 RANGE 21 WEST OF THE 6TH MERIDIAN PEACE RIVER DISTRICT
760-012132.000	FRACTIONAL SECTION 33 TOWNSHIP 88 RANGE 21 WEST OF THE 6TH MERIDIAN PEACE RIVER DISTRICT
760-012144.000	PARCEL A (J26233) OF THE WEST 1/2 OF THE WEST 1/2 OF SECTION 19 TOWNSHIP 83 RANGE 22 WEST OF THE 6TH MERIDIAN PEACE RIVER DISTRICT EXCEPT PLAN 26887
760-012154.000	THE NORTH EAST 1/4 OF SECTION 33 TOWNSHIP 83 RANGE 22 WEST OF THE 6TH MERIDIAN PEACE RIVER DISTRICT EXCEPT PLANS PGP36897 PGP39565 AND PGP41078
760-012155.000	THE NORTH WEST 1/4 OF SECTION 33 TOWNSHIP 83 RANGE 22 WEST OF THE 6TH MERIDIAN PEACE RIVER DISTRICT EXCEPT: PART ROAD ON PLAN BCP5774
760-012168.000	THE WEST 1/2 OF THE NORTH EAST 1/4 OF SECTION 1 TOWNSHIP 84 RANGE 22 WEST OF THE 6TH MERIDIAN PEACE RIVER DISTRICT
760-012171.000	THE WEST 1/2 OF SECTION 1 TOWNSHIP 84 RANGE 22 WEST OF THE 6TH MERIDIAN PEACE RIVER DISTRICT
760-012177.015	LOT B SECTION 6 TOWNSHIP 84 RANGE 22 WEST OF THE 6TH MERIDIAN PEACE RIVER DISTRICT PLAN PGP43104
760-012185.000	THE EAST 1/2 OF SECTION 12 TOWNSHIP 84 RANGE 22 WEST OF THE 6TH MERIDIAN PEACE RIVER DISTRICT
760-012186.010	THE WEST 1/2 OF SECTION 12 TOWNSHIP 84 RANGE 22 WEST OF THE SIXTH MERIDIAN PEACE RIVER DISTRICT
760-012208.000	THE NORTH EAST 1/4 OF THE NORTH EAST 1/4 OF SECTION 23 TOWNSHIP 84 RANGE 22 WEST OF THE 6TH MERIDIAN PEACE RIVER DISTRICT
760-012211.000	THE WEST 1/2 OF SECTION 24 TOWNSHIP 84 RANGE 22 WEST OF THE 6TH MERIDIAN PEACE RIVER DISTRICT
760-012213.000	THE EAST 1/2 OF SECTION 26 TOWNSHIP 84 RANGE 22 WEST OF THE 6TH MERIDIAN PEACE RIVER DISTRICT
760-012228.000	THE NORTH EAST 1/4 OF SECTION 33 TOWNSHIP 84 RANGE 22 WEST OF THE 6TH MERIDIAN PEACE RIVER DISTRICT
760-012230.000	THE NORTH EAST 1/4 OF SECTION 34 TOWNSHIP 84 RANGE 22 WEST OF THE 6TH MERIDIAN PEACE RIVER DISTRICT, EXCEPT THE NORTH 80 FEET
760-012233.500	THE SOUTH EAST 1/4 OF SECTION 35 TOWNSHIP 84 RANGE 22 WEST OF THE 6TH MERIDIAN PEACE RIVER DISTRICT
760-012244.000	THE EAST 1/2 OF SECTION 1 TOWNSHIP 85 RANGE 22 WEST OF THE SIXTH MERIDIAN PEACE RIVER DISTRICT
760-012251.100	THE NORTH EAST 1/4 OF SECTION 6 TOWNSHIP 85 RANGE 22 WEST OF THE SIXTH MERIDIAN PEACE RIVER DISTRICT EXCEPT THE MOST WESTERLY AND SOUTHERLY 25 METRES IN PARALLEL WIDTH THEREOF
760-012254.000	SECTION 10 TOWNSHIP 85 RANGE 22 WEST OF THE 6TH MERIDIAN PEACE RIVER DISTRICT
760-012255.000	THE NORTH WEST 1/4 OF THE SOUTH WEST 1/4 OF SECTION 11 TOWNSHIP 85 RANGE 22 WEST OF THE 6TH MERIDIAN PEACE RIVER DISTRICT

Folio Number	Legal Description
760-012257.000	THE EAST 1/2 OF SECTION 12 TOWNSHIP 85 RANGE 22 WEST OF THE 6TH MERIDIAN PEACE RIVER DISTRICT
760-012271.000	THE SOUTH EAST 1/4 OF SECTION 33 TOWNSHIP 85 RANGE 22 WEST OF THE 6TH MERIDIAN PEACE RIVER DISTRICT
760-012298.001	BLOCK A OF SECTION 18 TOWNSHIP 88 RANGE 22 WEST OF THE SIXTH MERIDIAN PEACE RIVER DISTRICT EXCEPT THE MOST WESTERLY 80 FEET IN PARALLEL WIDTH THEREOF
760-012303.000	BLOCK A OF SECTION 21 TOWNSHIP 88 RANGE 22 WEST OF THE SIXTH MERIDIAN PEACE RIVER DISTRICT
760-012308.000	BLOCK B OF SECTION 23 TOWNSHIP 88 RANGE 22 WEST OF THE SIXTH MERIDIAN PEACE RIVER DISTRICT
760-012314.000	THE SOUTH WEST 1/4 OF SECTION 27 TOWNSHIP 88 RANGE 22 WEST OF THE SIXTH MERIDIAN PEACE RIVER DISTRICT
760-012316.000	THE EAST 1/2 SECTION 28 TOWNSHIP 88 RANGE 22 WEST OF THE SIXTH MERIDIAN PEACE RIVER DISTRICT
760-012321.000	BLOCK A OF SECTION 30 TOWNSHIP 88 RANGE 22 WEST OF THE 6TH MERIDIAN PEACE RIVER DISTRICT
760-012326.000	BLOCK A OF SECTION 34 TOWNSHIP 88 RANGE 22 WEST OF THE 6TH MERIDIAN PEACE RIVER DISTRICT
760-012326.100	BLOCK B OF SECTION 34 TOWNSHIP 88 RANGE 22 WEST OF THE 6TH MERIDIAN PEACE RIVER DISTRICT
760-012327.000	BLOCK A OF SECTION 35 TOWNSHIP 88 RANGE 22 WEST OF THE 6TH MERIDIAN PEACE RIVER DISTRICT
760-012341.000	PARCEL A (86330M) OF THE SOUTH EAST 1/4 OF SECTION 9 TOWNSHIP 83 RANGE 23 WEST OF THE 6TH MERIDIAN PEACE RIVER DISTRICT EXCEPT PLANS 15320, 23138 AND EPP106134
760-012342.000	LOT 1 SECTION 9 TOWNSHIP 83 RANGE 23 WEST OF THE 6TH MERIDIAN PEACE RIVER DISTRICT PLAN 15320
760-012381.010	LOT A SECTION 1 TOWNSHIP 84 RANGE 23 WEST OF THE 6TH MERIDIAN PEACE RIVER DISTRICT PLAN EPP67759 EXCEPT PART IN PLAN EPP67761
760-012382.000	THE NORTH 1/2 OF SECTION 3 TOWNSHIP 84 RANGE 23 WEST OF THE 6TH MERIDIAN PEACE RIVER DISTRICT EXCEPT THE MOST NORTHERLY 80 FEET IN PARALLEL WIDTH THEREOF
760-012391.000	THE EAST 1/2 OF SECTION 13 TOWNSHIP 84 RANGE 23 WEST OF THE 6TH MERIDIAN PEACE RIVER DISTRICT
760-012392.000	THE WEST 1/2 OF SECTION 13 TOWNSHIP 84 RANGE 23 WEST OF THE 6TH MERIDIAN PEACE RIVER DISTRICT
760-012404.000	THE NORTH EAST 1/4 OF SECTION 24 TOWNSHIP 84 RANGE 23 WEST OF THE 6TH MERIDIAN PEACE RIVER DISTRICT
760-012406.000	NORTH WEST 1/4 OF SECTION 24 TOWNSHIP 84 RANGE 23 WEST OF THE 6TH MERIDIAN PEACE RIVER DISTRICT
760-012460.100	LOT C SECTION 18 TOWNSHIP 85 RANGE 23 WEST OF THE 6TH MERIDIAN PEACE RIVER DISTRICT PLAN PGP37843
760-012465.000	THE NORTH EAST 1/4 OF SECTION 21 TOWNSHIP 85 RANGE 23 WEST OF THE 6TH MERIDIAN PEACE RIVER DISTRICT
760-012479.000	THE NORTH WEST 1/4 OF SECTION 24 TOWNSHIP 85 RANGE 23 WEST OF THE 6TH MERIDIAN PEACE RIVER DISTRICT

Folio Number	Legal Description
760-012482.000	THE NORTH WEST 1/4 OF SECTION 25 TOWNSHIP 85 RANGE 23 WEST OF THE 6TH MERIDIAN PEACE RIVER DISTRICT
760-012486.200	THE NORTH WEST 1/4 OF SECTION 26 TOWNSHIP 85 RANGE 23 WEST OF THE 6TH MERIDIAN PEACE RIVER DISTRICT EXCEPT THE MOST EASTERLY AND MOST SOUTHERLY 25 METRES AND EXCEPT PLAN 33466
760-012491.000	THE NORTH EAST 1/4 OF SECTION 28 TOWNSHIP 85 RANGE 23 WEST OF THE 6TH MERIDIAN PEACE RIVER DISTRICT
760-012500.000	THE SOUTH EAST 1/4 OF THE NORTH EAST 1/4 SECTION 33 TOWNSHIP 85 RANGE 23 WEST OF THE 6TH MERIDIAN PEACE RIVER DISTRICT
760-012504.000	THE NORTH EAST 1/4 OF SECTION 34 TOWNSHIP 85 RANGE 23 WEST OF THE 6TH MERIDIAN PEACE RIVER DISTRICT
760-012509.100	THE NORTH WEST 1/4 OF SECTION 35 TOWNSHIP 85 RANGE 23 WEST OF THE 6TH MERIDIAN PEACE RIVER DISTRICT
760-012545.000	THE NORTH WEST 1/4 OF SECTION 11 TOWNSHIP 86 RANGE 23 WEST OF THE 6TH MERIDIAN PEACE RIVER DISTRICT
760-012548.000	THE WEST 1/2 OF SECTION 14 TOWNSHIP 86 RANGE 23 WEST OF THE 6TH MERIDIAN PEACE RIVER DISTRICT
760-012587.000	THE WEST 1/2 OF SECTION 5 TOWNSHIP 88 RANGE 23 WEST OF THE 6TH MERIDIAN PEACE RIVER DISTRICT, EXCEPT BLOCK A OF THE NORTH WEST 1/4
760-001206.001	REGIONAL DISTRICT 22
760-001225.001	REGIONAL DISTRICT 22
760-001313.001	SECTION 32 LAND DISTRICT 44 TOWNSHIP 111
760-009232.001	SECTION 4 RANGE 18 MERIDIAN W6 LAND DISTRICT 44 TOWNSHIP 88
760-011121.001	REGIONAL DISTRICT 22
760-012587.150	LOT 1 SECTION 6 TOWNSHIP 88 RANGE 23 WEST OF THE 6TH MERIDIAN PEACE RIVER DISTRICT PLAN EPP14080
760-012588.000	BLOCK A OF THE NORTH WEST 1/4 OF SECTION 8 TOWNSHIP 88 RANGE 23 WEST OF THE 6TH MERIDIAN PEACE RIVER DISTRICT
760-012589.000	BLOCK B OF THE NORTH WEST 1/4 OF SECTION 8 TOWNSHIP 88 RANGE 23 WEST OF THE 6TH MERIDIAN PEACE RIVER DISTRICT
760-012591.030	LOT 2 SECTION 13 TOWNSHIP 88 RANGE 23 WEST OF THE SIXTH MERIDIAN PEACE RIVER DISTRICT PLAN BCP39881
760-012592.000	PARCEL A (P25872) OF THE SOUTH EAST 1/4 SECTION 14 TOWNSHIP 88 RANGE 23 WEST OF THE 6TH MERIDIAN PEACE RIVER DISTRICT
760-012646.000	THE NORTH EAST 1/4 OF SECTION 19 TOWNSHIP 82 RANGE 24 WEST OF THE SIXTH MERIDIAN PEACE RIVER DISTRICT EXCEPT PLANS 21821 AND 29812
760-012694.000	SECTION 8 TOWNSHIP 83 RANGE 24 WEST OF THE 6TH MERIDIAN PEACE RIVER DISTRICT
760-012704.500	BLOCK A SECTION 18 TOWNSHIP 83 RANGE 24 WEST OF THE 6TH MERIDIAN PEACE RIVER DISTRICT EXCEPT: PART DEDICATED ROAD ON PLAN BCP23528
760-012709.100	LOT 1 SECTION 21 TOWNSHIP 83 RANGE 24 WEST OF THE 6TH MERIDIAN PEACE RIVER DISTRICT PLAN BCP12646
760-012709.150	LOT 2 SECTION 21 TOWNSHIP 83 RANGE 24 WEST OF THE 6TH MERIDIAN PEACE RIVER DISTRICT PLAN BCP12646
760-012715.100	SECTION 28 TOWNSHIP 83 RANGE 24 WEST OF THE 6TH MERIDIAN PEACE RIVER DISTRICT
760-012715.600	BLOCK B SECTION 29 TOWNSHIP 83 RANGE 24 WEST OF THE 6TH MERIDIAN PEACE RIVER DISTRICT

Folio Number	Legal Description
760-012715.850	BLOCK E DISTRICT LOT 3302 AND OF SECTIONS 29 AND 30 TOWNSHIP 83 RANGE 24 WEST OF THE 6TH MERIDIAN PEACE RIVER DISTRICT
760-012717.030	NORTH EAST 1/4 OF SECTION 31 TOWNSHIP 83 RANGE 24 WEST OF THE 6TH MERIDIAN PEACE RIVER DISTRICT
760-012722.000	BLOCK A OF SECTIONS 3 AND 4 TOWNSHIP 84 RANGE 24 WEST OF THE 6TH MERIDIAN PEACE RIVER DISTRICT
760-012723.000	LOT 1 SECTIONS 5 AND 6 TOWNSHIP 84 RANGE 24 WEST OF THE 6TH MERIDIAN PEACE RIVER DISTRICT PLAN EPP37882
760-012723.060	BLOCK G SECTION 6 TOWNSHIP 84 RANGE 24 WEST OF THE 6TH MERIDIAN PEACE RIVER DISTRICT
760-012723.100	BLOCK E SECTIONS 5 AND 6 TOWNSHIP 84 RANGE 24 WEST OF THE 6TH MERIDIAN PEACE RIVER DISTRICT
760-012725.000	SECTION 7 TOWNSHIP 84 RANGE 24 WEST OF THE 6TH MERIDIAN PEACE RIVER DISTRICT
760-012730.000	THE SOUTH WEST 1/4 OF SECTION 17 TOWNSHIP 84 RANGE 24 WEST OF THE 6TH MERIDIAN PEACE RIVER DISTRICT
760-012730.500	SECTION 16 TOWNSHIP 84 RANGE 24 WEST OF THE 6TH MERIDIAN PEACE RIVER DISTRICT
760-012764.300	BLOCK A OF SECTION 29 TOWNSHIP 87 RANGE 24 WEST OF THE 6TH MERIDIAN PEACE RIVER DISTRICT
760-012766.000	THE NORTH EAST 1/4 OF SECTION 33 TOWNSHIP 87 RANGE 24 WEST OF THE 6TH MERIDIAN PEACE RIVER DISTRICT
760-012767.000	THE WEST 1/2 OF SECTION 34 TOWNSHIP 87 RANGE 24 WEST OF THE 6TH MERIDIAN PEACE RIVER DISTRICT
760-012785.000	THE NORTH WEST 1/4 OF SECTION 9 TOWNSHIP 88 RANGE 24 WEST OF THE 6TH MERIDIAN PEACE RIVER DISTRICT
760-012786.000	PARCEL A (P20828) OF LEGAL SUBDIVISION 14 SECTION 16 TOWNSHIP 88 RANGE 24 WEST OF THE SIXTH MERIDIAN PEACE RIVER DISTRICT
760-012786.010	LEGAL SUBDIVISION 15 SECTION 16 TOWNSHIP 88 RANGE 24 WEST OF THE SIXTH MERIDIAN PEACE RIVER DISTRICT
760-012814.575	THE SOUTH 1/2 OF SECTION 17 TOWNSHIP 83 RANGE 25 WEST OF THE 6TH MERIDIAN PEACE RIVER DISTRICT
760-012815.600	SECTION 21 TOWNSHIP 83 RANGE 25 WEST OF THE 6TH MERIDIAN PEACE RIVER DISTRICT
760-012816.005	PARCEL 5 SECTIONS 15 AND 22 TOWNSHIP 83 RANGE 25 WEST OF THE 6TH MERIDIAN PEACE RIVER DISTRICT PLAN 27936
760-012816.205	PARCEL 3 SECTIONS 14 AND 23 TOWNSHIP 83 RANGE 25 WEST OF THE 6TH MERIDIAN PEACE RIVER DISTRICT PLAN 27936
760-012816.300	PARCEL 4 SECTIONS 14 AND 23 TOWNSHIP 83 RANGE 25 WEST OF THE 6TH MERIDIAN PEACE RIVER DISTRICT PLAN 27936
760-012817.050	LOT A SECTION 24 TOWNSHIP 83 RANGE 25 WEST OF THE 6TH MERIDIAN PEACE RIVER DISTRICT PLAN 33477
760-012855.500	PARCEL A SECTION 1 TOWNSHIP 87 RANGE 25 WEST OF THE 6TH MERIDIAN PEACE RIVER DISTRICT PLAN BCP635
760-012856.000	LEGAL SUBDIVISION 11 OF SECTION 1 TOWNSHIP 87 RANGE 25 WEST OF THE 6TH MERIDIAN PEACE RIVER DISTRICT
760-012871.000	THE NORTH WEST 1/4 OF SECTION 9 TOWNSHIP 87 RANGE 25 WEST OF THE 6TH MERIDIAN PEACE RIVER DISTRICT

Folio Number	Legal Description
760-012872.000	THE SOUTH 1/2 OF SECTION 9 TOWNSHIP 87 RANGE 25 WEST OF THE 6TH MERIDIAN PEACE RIVER DISTRICT
760-012873.000	THE EAST 1/2 OF THE SOUTH WEST 1/4 OF SECTION 10 TOWNSHIP 87 RANGE 25 WEST OF THE 6TH MERIDIAN PEACE RIVER DISTRICT
760-012888.000	THE NORTH 1/2 OF THE NORTH EAST 1/4 OF SECTION 28 TOWNSHIP 87 RANGE 25 WEST OF THE 6TH MERIDIAN PEACE RIVER DISTRICT
760-012890.000	SECTION 31 TOWNSHIP 87 RANGE 25 WEST OF THE 6TH MERIDIAN PEACE RIVER DISTRICT
760-012891.000	THE EAST 1/2 OF SECTION 32 TOWNSHIP 87 RANGE 25 WEST OF THE SIXTH MERIDIAN PEACE RIVER DISTRICT
760-012892.000	THE FRACTIONAL SOUTH WEST 1/4 OF SECTION 32 TOWNSHIP 87 RANGE 25 WEST OF THE 6TH MERIDIAN PEACE RIVER DISTRICT
760-012894.000	THE NORTH WEST 1/4 OF SECTION 33 TOWNSHIP 87 RANGE 25 WEST OF THE 6TH MERIDIAN PEACE RIVER DISTRICT
760-012913.000	THE SOUTH 1/2 OF SECTION 10 TOWNSHIP 88 RANGE 25 WEST OF THE 6TH MERIDIAN PEACE RIVER DISTRICT
760-012918.000	THE WEST 1/2 OF THE NORTH EAST 1/4 OF SECTION 24 TOWNSHIP 88 RANGE 25 WEST OF THE SIXTH MERIDIAN PEACE RIVER DISTRICT
760-040036.000	THE NORTH EAST 1/4 OF DISTRICT LOT 41 PEACE RIVER DISTRICT
760-040037.000	THE SOUTH EAST 1/4 OF DISTRICT LOT 41 PEACE RIVER DISTRICT
760-040057.000	DISTRICT LOT 64 PEACE RIVER DISTRICT
760-040090.000	THE SOUTH EAST 1/4 OF DISTRICT LOT 108 PEACE RIVER DISTRICT
760-040120.000	LOT 1 DISTRICT LOTS 133, 136, 137, 139 AND 4226 PEACE RIVER DISTRICT PLAN EPP22284
760-040523.100	LOT 1 DISTRICT LOTS 446, 907 AND 2661 PEACE RIVER DISTRICT PLAN PGP35614
760-040582.100	THE NORTH EAST 1/4 OF DISTRICT LOT 479 PEACE RIVER DISTRICT
760-040640.000	DISTRICT LOT 499 PEACE RIVER DISTRICT
760-040675.000	DISTRICT LOT 532 PEACE RIVER DISTRICT, EXCEPT PLAN H450
760-040767.000	DISTRICT LOT 586 PEACE RIVER DISTRICT, EXCEPT THEREOUT STRIPS OF LAND BEING THE MOST WESTERLY 80 FEET AND THE MOST SOUTHERLY 80 FEET IN PARALLEL WIDTH THEREOF
760-040811.000	THE SOUTH 1/2 OF DISTRICT LOT 632 PEACE RIVER DISTRICT
760-040813.000	THE SOUTH 1/2 OF DISTRICT LOT 633 PEACE RIVER DISTRICT
760-040825.000	THE NORTH 1/2 OF DISTRICT LOT 641 PEACE RIVER DISTRICT
760-040839.000	THE NORTH 1/2 OF DISTRICT LOT 648 PEACE RIVER DISTRICT EXCEPT PART IN PLAN EPP71295
760-040839.100	LOT A DISTRICT LOT 648 PEACE RIVER DISTRICT PLAN EPP71295
760-040840.100	LOT A DISTRICT LOT 648 PEACE RIVER DISTRICT PLAN EPP111850
760-040843.000	NORTH 1/2 DISTRICT LOT 650 PEACE RIVER DISTRICT
760-040845.100	LOT 1 DISTRICT LOT 651 PEACE RIVER DISTRICT PLAN BCP6650
760-040845.300	LOT A DISTRICT LOT 651 PEACE RIVER DISTRICT PLAN EPP31614
760-040845.400	LOT B DISTRICT LOT 651 PEACE RIVER DISTRICT PLAN EPP31614
760-040848.000	THE NORTH 1/2 OF DISTRICT LOT 653 PEACE RIVER DISTRICT
760-040853.000	THE SOUTH 1/2 OF DISTRICT LOT 655 PEACE RIVER DISTRICT
760-040855.000	DISTRICT LOT 657 PEACE RIVER DISTRICT EXCEPT THE MOST WESTERLY 80 FEET IN PARALLEL WIDTH THEREOF
760-040861.001	BLOCK B DISTRICT LOT 660 PEACE RIVER DISTRICT

Folio Number	Legal Description
760-040863.000	THE EAST 1/2 OF DISTRICT LOT 661 PEACE RIVER DISTRICT EXCEPT THE MOST SOUTHERLY 40 FEET IN PARALLEL WIDTH THEREOF
760-040864.000	THE WEST 1/2 OF DISTRICT LOT 661 PEACE RIVER DISTRICT
760-040866.000	THE WEST 1/2 OF DISTRICT LOT 662 PEACE RIVER DISTRICT EXCEPT THE MOST NORTHERLY 80 FEET IN PARALLEL WIDTH THEREOF
760-040895.500	THE WEST 1/2 OF DISTRICT LOT 693 PEACE RIVER DISTRICT
760-040899.015	LOT 1 DISTRICT LOT 694 PEACE RIVER DISTRICT PLAN BCP39927
760-040899.020	LOT 2 DISTRICT LOT 694 PEACE RIVER DISTRICT PLAN BCP39927
760-040900.000	THE WEST 1/2 OF DISTRICT LOT 695 PEACE RIVER DISTRICT EXCEPT PLAN PGP36948
760-040903.000	THE EAST 1/2 OF DISTRICT LOT 697 PEACE RIVER DISTRICT,
760-040905.100	LOT 1 DISTRICT LOT 698 PEACE RIVER DISTRICT PLAN EPP35043
760-040905.400	LOT A DISTRICT LOTS 698 PEACE RIVER DISTRICT PLAN EPP97457
760-040905.500	LOT B DISTRICT LOT 698 PEACE RIVER DISTRICT PLAN EPP97457
760-040906.000	THE WEST 1/2 OF DISTRICT LOT 698 PEACE RIVER DISTRICT, EXCEPT THE EAST 80 FEET AND EXCEPT PART IN PLAN EPP43598
760-040906.100	LOT 1 DISTRICT LOT 698 PEACE RIVER DISTRICT PLAN EPP43598
760-040910.000	DISTRICT LOT 702 PEACE RIVER DISTRICT
760-040926.000	DISTRICT LOT 718 PEACE RIVER DISTRICT EXCEPT THE MOST NORTHERLY AND WESTERLY 80 FEET IN PARALLEL WIDTHS THEREOF
760-040966.000	DISTRICT LOT 757 PEACE RIVER DISTRICT, EXCEPT THE MOST SOUTHERLY 25 METRES IN PARALLEL WIDTH THEREOF
760-040984.800	LOT 2 DISTRICT LOT 777 PEACE RIVER DISTRICT PLAN 16785
760-040984.900	LOT 3 DISTRICT LOT 777 PEACE RIVER DISTRICT PLAN 16785
760-040985.000	LOT 4 DISTRICT LOT 777 PEACE RIVER DISTRICT PLAN 16785
760-040986.000	LOT 5 DISTRICT LOT 777 PEACE RIVER DISTRICT PLAN 16785
760-040986.200	LOT 6 DISTRICT LOT 777 PEACE RIVER DISTRICT PLAN 16785
760-040986.300	LOT 7 DISTRICT LOT 777 PEACE RIVER DISTRICT PLAN 16785
760-040986.400	LOT 8 DISTRICT LOT 777 PEACE RIVER DISTRICT PLAN 16785
760-040986.800	THAT PART OF LOT 10 DISTRICT LOT 777 PEACE RIVER DISTRICT PLAN 16785 LYING NORTH EAST OF A LINE PARALLEL TO AND 276 FEET PERPENDICULARLY DISTANT FROM THE SOUTH WEST BOUNDARY
760-040987.000	PARCEL A (O21355) OF LOT 10 DISTRICT LOT 777 PEACE RIVER DISTRICT PLAN 16785
760-040987.100	LOT 11 DISTRICT LOT 777 PEACE RIVER DISTRICT PLAN 16785
760-040988.000	LOT 12 DISTRICT LOT 777 PEACE RIVER DISTRICT PLAN 16785
760-040988.070	LOT 19 DISTRICT LOT 777 PEACE RIVER DISTRICT PLAN 16785
760-041012.005	LOT 1 DISTRICT LOT 804 PEACE RIVER DISTRICT PLAN 31808, EXCEPT PLAN PGP45706
760-041013.000	DISTRICT LOT 805 PEACE RIVER DISTRICT
760-041015.000	PARCEL A (O3351) OF DISTRICT LOT 807 PEACE RIVER DISTRICT
760-041022.000	DISTRICT LOT 814 PEACE RIVER DISTRICT
760-041024.000	THAT PART OF UNSURVEYED CROWN LAND PEACE RIVER DISTRICT AS SHOWN ON PLAN 29547
760-041026.000	BLOCK A DISTRICT LOT 818 PEACE RIVER DISTRICT
760-041031.000	LOT A DISTRICT LOTS 822 AND 4065 PEACE RIVER DISTRICT PLAN PGP45345
760-041062.075	THE SOUTHEAST 1/4 OF DISTRICT LOT 853 PEACE RIVER DISTRICT
760-041063.100	PARCEL A (S22120) OF THE WEST 1/2 OF DISTRICT LOT 854 PEACE RIVER DISTRICT
760-041065.000	DISTRICT LOT 856 PEACE RIVER DISTRICT EXCEPT PLAN PGP45636
760-041065.100	LOT 1 DISTRICT LOT 856 PEACE RIVER DISTRICT PLAN PGP45636

Folio Number	Legal Description
760-041084.000	DISTRICT LOT 875 PEACE RIVER DISTRICT, EXCEPT THE MOST WESTERLY 80 FEET AND THE MOST SOUTHERLY 80 FEET IN PARALLEL WIDTHS THEREOF
760-041106.000	DISTRICT LOT 897 PEACE RIVER DISTRICT
760-041138.000	DISTRICT LOT 930 PEACE RIVER DISTRICT
760-041177.100	LOT 1 DISTRICT LOT 964 PEACE RIVER DISTRICT PLAN BCP18711
760-041177.200	LOT 1 DISTRICT LOT 964 PEACE RIVER DISTRICT PLAN BCP30199
760-041177.300	BLOCK C DISTRICT LOT 964 PEACE RIVER DISTRICT
760-041177.400	DISTRICT LOT 4102 PEACE RIVER DISTRICT
760-041178.100	BLOCK C OF DISTRICT LOT 965 PEACE RIVER DISTRICT
760-041188.000	DISTRICT LOT 975 PEACE RIVER DISTRICT
760-041200.000	DISTRICT LOT 987 PEACE RIVER DISTRICT
760-041201.000	DISTRICT LOT 988 PEACE RIVER DISTRICT, EXCEPT THE WEST 80 FEET
760-041399.000	DISTRICT LOT 1157 PEACE RIVER DISTRICT
760-041435.000	DISTRICT LOT 1206 PEACE RIVER DISTRICT
760-041462.200	THE WEST 1/2 OF DISTRICT LOT 1245 PEACE RIVER DISTRICT
760-041469.000	DISTRICT LOT 1252 PEACE RIVER DISTRICT EXCEPT: THE SOUTH 80 FEET AND PLAN PGP35612
760-041481.004	DISTRICT LOT 1264 PEACE RIVER DISTRICT
760-041497.000	DISTRICT LOT 1280 PEACE RIVER DISTRICT
760-041513.000	DISTRICT LOT 1296 PEACE RIVER DISTRICT
760-041518.000	THE FRACTIONAL EAST 1/2 OF DISTRICT LOT 1301 PEACE RIVER DISTRICT EXCEPT PLAN PGP37245 AND PART DEDICATED ROAD ON PLAN BCP25508
760-041519.000	THE NORTH WEST 1/4 OF DISTRICT LOT 1301 PEACE RIVER DISTRICT EXCEPT PART IN PLANS PGP37245 AND EPP38291
760-041519.100	LOT 1 DISTRICT LOT 1301 PEACE RIVER DISTRICT PLAN EPP38291
760-041519.200	LOT 2 DISTRICT LOT 1301 PEACE RIVER DISTRICT PLAN EPP38291
760-041521.000	DISTRICT LOT 1302 PEACE RIVER DISTRICT EXCEPT PLAN PGP42042
760-041526.000	THE NORTH EAST 1/4 OF DISTRICT LOT 1305 PEACE RIVER DISTRICT EXCEPT PLAN PGP37245
760-041548.000	THE FRACTIONAL SOUTH WEST 1/4 OF DISTRICT LOT 1319 PEACE RIVER DISTRICT
760-041606.500	LOT 1 DISTRICT LOT 1371 PEACE RIVER DISTRICT PLAN 28971
760-041613.000	DISTRICT LOT 1378 PEACE RIVER DISTRICT
760-041619.000	DISTRICT LOT 1384 PEACE RIVER DISTRICT
760-041620.005	BLOCK A DISTRICT LOT 1385 PEACE RIVER DISTRICT
760-041772.000	DISTRICT LOT 1499 PEACE RIVER DISTRICT
760-041847.001	DISTRICT LOT 1567 PEACE RIVER DISTRICT EXCEPT PLAN PGP45081
760-041850.000	DISTRICT LOT 1570 PEACE RIVER DISTRICT
760-041851.002	BLOCK B OF DISTRICT LOT 1571 PEACE RIVER DISTRICT
760-041851.038	LOT 1 DISTRICT LOT 1712 PEACE RIVER DISTRICT PLAN EPP96434
760-041852.000	DISTRICT LOT 1572 PEACE RIVER DISTRICT
760-040036.100	DISTRICT LOT 41 LAND DISTRICT 44
760-040845.101	DISTRICT LOT 651
760-040900.001	DISTRICT LOT 695
760-040903.001	REGIONAL DISTRICT 22
760-041497.001	DISTRICT LOT 1280
760-041548.001	REGIONAL DISTRICT 22
760-041606.100	DISTRICT LOT 1371 LAND DISTRICT 44

Folio Number	Legal Description
760-041745.100	DISTRICT LOT 1477 LAND DISTRICT 44
760-041948.100	DISTRICT LOT 4244 PEACE RIVER DISTRICT
760-042016.000	DISTRICT LOT 1776 PEACE RIVER DISTRICT EXCEPT THE SOUTH 25 METRES
760-042017.100	PARCEL A, PLAN PGP39831, DISTRICT LOT 1778, PEACE RIVER LAND DISTRICT, DL 2241, 3082, 3083, 4032, AND 4033
760-042264.000	DISTRICT LOT 1927 PEACE RIVER DISTRICT
760-042293.000	DISTRICT LOT 1955 PEACE RIVER DISTRICT EXCEPT THE MOST WESTERLY 24.384 METRES IN PARALLEL WIDTH THEREOF
760-042294.000	DISTRICT LOT 1956 PEACE RIVER DISTRICT
760-042299.000	DISTRICT LOT 1961 PEACE RIVER DISTRICT
760-042337.000	LOT 4 DISTRICT LOT 1995 PEACE RIVER DISTRICT PLAN 9590
760-042429.000	DISTRICT LOT 2032 PEACE RIVER DISTRICT
760-042481.000	DISTRICT LOT 2081 PEACE RIVER DISTRICT
760-042486.000	DISTRICT LOT 2086 PEACE RIVER DISTRICT
760-042487.000	DISTRICT LOT 2087 PEACE RIVER DISTRICT
760-042509.000	DISTRICT LOT 2100 PEACE RIVER DISTRICT
760-042538.000	DISTRICT LOT 2131 PEACE RIVER DISTRICT
760-042548.000	DISTRICT LOT 2140 PEACE RIVER DISTRICT
760-042582.100	LOT 1 DISTRICT LOT 2166 PEACE RIVER DISTRICT PLAN EPP83113
760-042582.200	LOT 2 DISTRICT LOT 2166 PEACE RIVER DISTRICT PLAN EPP83113
760-042583.000	DISTRICT LOT 2167 PEACE RIVER DISTRICT
760-042585.000	DISTRICT LOT 2169 PEACE RIVER DISTRICT
760-042599.001	PARCEL A(PH8506) OF BLOCK A DISTRICT LOT 2183 PEACE RIVER DISTRICT PLAN 10944
760-042600.965	LOT 1 BLOCK B DISTRICT LOT 2183 PEACE RIVER DISTRICT PLAN 10944
760-042600.970	LOT 2 BLOCK B DISTRICT LOT 2183 PEACE RIVER DISTRICT PLAN 10944
760-042600.975	LOT 3 BLOCK B DISTRICT LOT 2183 PEACE RIVER DISTRICT PLAN 10944
760-042600.980	LOT 4 BLOCK B DISTRICT LOT 2183 PEACE RIVER DISTRICT PLAN 10944
760-042600.985	LOT 5 BLOCK B DISTRICT LOT 2183 PEACE RIVER DISTRICT PLAN 10944
760-042600.990	LOT 6 BLOCK B DISTRICT LOT 2183 PEACE RIVER DISTRICT PLAN 10944
760-042601.060	LOT 5 BLOCK D DISTRICT LOT 2183 PEACE RIVER DISTRICT PLAN 10944
760-042606.000	DISTRICT LOT 2187 PEACE RIVER DISTRICT
760-042618.000	DISTRICT LOT 2199 PEACE RIVER DISTRICT, EXCEPT PLAN 31513
760-042634.000	DISTRICT LOT 2207 PEACE RIVER DISTRICT
760-042635.000	DISTRICT LOT 2208 PEACE RIVER DISTRICT
760-042670.100	PARCEL A(PLAN 19496) OF DISTRICT LOT 2242 PEACE RIVER DISTRICT
760-042676.000	DISTRICT LOT 2246 PEACE RIVER DISTRICT
760-042707.000	DISTRICT LOT 2275 PEACE RIVER DISTRICT, EXCEPT THE MOST SOUTHERLY 80 FEET IN PARALLEL WIDTH THEREOF
760-042708.000	PARCEL A (T21424) DISTRICT LOT 2276 PEACE RIVER DISTRICT
760-042711.001	BLOCK A DISTRICT LOT 2279 PEACE RIVER DISTRICT
760-042756.010	LOT A DISTRICT LOT 2326 PEACE RIVER DISTRICT PLAN BCP13595
760-042756.020	LOT B DISTRICT LOT 2326 PEACE RIVER DISTRICT PLAN BCP13595
760-042757.000	DISTRICT LOT 2327 PEACE RIVER DISTRICT
760-042758.010	THE NORTH 1/2 OF DISTRICT LOT 2329 PEACE RIVER DISTRICT EXCEPT THE WEST 80 FEET
760-042758.100	LOT 1 DISTRICT LOT 2328 PEACE RIVER DISTRICT PLAN EPP21407
760-042758.200	LOT 2 DISTRICT LOT 2328 PEACE RIVER DISTRICT PLAN EPP21407

Folio Number	Legal Description
760-042760.005	THE EAST 1/2 OF DISTRICT LOT 2330 PEACE RIVER DISTRICT, EXCEPT THE SOUTH 80 FEET
760-042760.100	THE WEST 1/2 OF DISTRICT LOT 2330 PEACE RIVER DISTRICT EXCEPT THE SOUTH 80 FEET
760-042761.000	THE EAST 1/2 OF DISTRICT LOT 2331 PEACE RIVER DISTRICT, EXCEPT THE MOST SOUTHERLY 80 FEET THEREOF
760-042764.000	THE WEST 1/2 OF DISTRICT LOT 2333 PEACE RIVER DISTRICT
760-042765.000	THE EAST 1/2 OF DISTRICT LOT 2333 PEACE RIVER DISTRICT
760-042766.000	DISTRICT LOT 2334 PEACE RIVER DISTRICT EXCEPT PLAN 23179
760-042766.005	LOT 1 DISTRICT LOT 2334 PEACE RIVER DISTRICT PLAN 23179
760-042767.000	DISTRICT LOT 2335 PEACE RIVER DISTRICT
760-042768.000	DISTRICT LOT 2336 PEACE RIVER DISTRICT
760-042771.000	THE WEST 1/2 OF DISTRICT LOT 2338 PEACE RIVER DISTRICT EXCEPT THE SOUTHERLY 80 FEET
760-042772.000	THE WEST 1/2 OF DISTRICT LOT 2339 PEACE RIVER DISTRICT, EXCEPT THE WEST 24.384 METRES AND PLAN 20549
760-042773.000	THE NORTH EAST 1/4 OF DISTRICT LOT 2339 PEACE RIVER DISTRICT
760-042774.000	THE SOUTH EAST 1/4 OF DISTRICT LOT 2339 PEACE RIVER DISTRICT EXCEPT THE SOUTH 80 FEET
760-042775.000	PARCEL A (U6235) OF DISTRICT LOT 2340 PEACE RIVER DISTRICT
760-042775.500	PARCEL B (U6236) OF DISTRICT LOT 2340 PEACE RIVER DISTRICT
760-042776.000	DISTRICT LOT 2341 PEACE RIVER DISTRICT
760-042778.000	THE EAST 1/2 OF DISTRICT LOT 2342 PEACE RIVER DISTRICT, EXCEPT THE MOST SOUTHERLY 25 METRES IN PARALLEL WIDTH THEREOF
760-042779.000	THE NORTH WEST 1/4 OF DISTRICT LOT 2342 PEACE RIVER DISTRICT, EXCEPT THE WEST 80 FEET
760-042780.010	LOT 1 DISTRICT LOT 2343 PEACE RIVER DISTRICT PLAN EPP3860
760-042781.100	LOT A DISTRICT LOT 2343 PEACE RIVER DISTRICT PLAN EPP17822
760-042781.200	LOT B DISTRICT LOT 2343 PEACE RIVER DISTRICT PLAN EPP17822
760-042782.000	DISTRICT LOT 2344 PEACE RIVER DISTRICT, EXCEPT PLAN EPP16076
760-042783.000	PARCEL A (PLAN 16920) OF DISTRICT LOT 2345 PEACE RIVER DISTRICT
760-042785.000	DISTRICT LOT 2346 PEACE RIVER DISTRICT
760-042786.000	DISTRICT LOT 2347 PEACE RIVER DISTRICT EXCEPT PLAN EPP28820
760-042786.100	LOT A DISTRICT LOT 2347 PEACE RIVER DISTRICT PLAN EPP28820
760-042787.000	DISTRICT LOT 2348 PEACE RIVER DISTRICT
760-042788.000	DISTRICT LOT 2349 PEACE RIVER DISTRICT, EXCEPT THE WEST AND SOUTH 80 FEET
760-042789.000	DISTRICT LOT 2350 PEACE RIVER DISTRICT, EXCEPT THE SOUTH 80 FEET AND PLAN 30406
760-042789.050	PARCEL A (PLAN 30406) DISTRICT LOT 2350 PEACE RIVER DISTRICT
760-042791.000	DISTRICT LOT 2352 PEACE RIVER DISTRICT
760-042793.000	DISTRICT LOT 2354 PEACE RIVER DISTRICT, EXCEPT THE MOST WESTERLY 80 FEET IN PARALLEL WIDTH THEREOF
760-042796.100	LOT 1 DISTRICT LOT 2357 PEACE RIVER DISTRICT PLAN EPP61630
760-042796.200	LOT 2 DISTRICT LOT 2357 PEACE RIVER DISTRICT PLAN EPP61630
760-042801.000	DISTRICT LOT 2361 PEACE RIVER DISTRICT EXCEPT THE EAST 25 METRES
760-042802.000	DISTRICT LOT 2362 PEACE RIVER DISTRICT

Folio Number	Legal Description
760-042804.000	DISTRICT LOT 2364 PEACE RIVER DISTRICT
760-042805.100	THE NORTH 1/2 OF DISTRICT LOT 2365 PEACE RIVER DISTRICT
760-042805.200	THE SOUTH 1/2 OF DISTRICT LOT 2365 PEACE RIVER DISTRICT
760-042806.000	DISTRICT LOT 2366 PEACE RIVER DISTRICT, EXCEPT THE WEST AND SOUTH 80 FEET
760-042807.000	DISTRICT LOT 2367 PEACE RIVER DISTRICT
760-042808.000	DISTRICT LOT 2368 PEACE RIVER DISTRICT, EXCEPT PLAN PGP36412
760-042810.000	DISTRICT LOT 2370 PEACE RIVER DISTRICT
760-042811.020	THE WEST 1/2 OF DISTRICT LOT 2371 PEACE RIVER DISTRICT
760-042812.000	PARCEL A (P18418) OF THE SOUTH EAST 1/4 OF DISTRICT LOT 2371 PEACE RIVER DISTRICT
760-042817.000	DISTRICT LOT 2375 PEACE RIVER DISTRICT
760-042818.010	LOT A DISTRICT LOT 2376 PEACE RIVER DISTRICT PLAN EPP121179
760-042818.020	LOT B DISTRICT LOT 2376 PEACE RIVER DISTRICT PLAN EPP121179
760-042826.000	DISTRICT LOT 2384 PEACE RIVER DISTRICT
760-042828.000	DISTRICT LOT 2386 PEACE RIVER DISTRICT EXCEPT THE SOUTH 80 FEET
760-042829.000	LOT 2 DISTRICT LOTS 2387 AND 2764 PEACE RIVER DISTRICT PLAN 33494 EXCEPT PLAN EPP10613
760-042829.100	LOT A DISTRICT LOT 2387 PEACE RIVER DISTRICT PLAN EPP10613
760-042830.000	LOT 1 DISTRICT LOTS 2387 AND 2764 PEACE RIVER DISTRICT PLAN 33494
760-042831.000	DISTRICT LOT 2388 PEACE RIVER DISTRICT, EXCEPT THE SOUTH 1/2 AND PART SUBDIVIDED BY PLAN EPP2643
760-042831.010	LOT 1 DISTRICT LOT 2388 PEACE RIVER DISTRICT PLAN EPP2643
760-042832.000	THE SOUTH 1/2 OF DISTRICT LOT 2388 PEACE RIVER DISTRICT
760-042833.000	DISTRICT LOT 2389 PEACE RIVER DISTRICT, EXCEPT PLAN 31448
760-042834.000	THE NORTH 1/2 OF DISTRICT LOT 2390 PEACE RIVER DISTRICT
760-042834.500	THE SOUTH EAST 1/4 OF DISTRICT LOT 2390 EXCEPT: PART SUBDIVIDED BY PLAN BCP19491 PEACE RIVER DISTRICT
760-042834.600	LOT 1 DISTRICT LOT 2390 PEACE RIVER DISTRICT PLAN BCP19491
760-042835.000	THE SOUTH WEST 1/4 OF DISTRICT LOT 2390 PEACE RIVER DISTRICT, EXCEPT PLAN 29055
760-042835.050	LOT 1 DISTRICT LOT 2390 PEACE RIVER DISTRICT PLAN 29055
760-042836.000	PARCEL A (H26355) OF DISTRICT LOT 2391 PEACE RIVER DISTRICT EXCEPT PLANS EPP59403 AND EPP59404
760-042836.050	LOT 1 DISTRICT LOT 2391 PEACE RIVER DISTRICT PLAN EPP59404
760-042836.200	LOT 2 DISTRICT LOT 2391 PEACE RIVER DISTRICT PLAN EPP59403
760-042836.300	LOT 3 DISTRICT LOT 2391 PEACE RIVER DISTRICT PLAN EPP59403
760-042837.005	LOT 1 DISTRICT LOT 2392 PEACE RIVER DISTRICT PLAN 22839 EXCEPT PART IN PLAN EPP51158
760-042837.010	LOT 2 DISTRICT LOT 2392 PEACE RIVER DISTRICT PLAN 22839
760-042847.000	DISTRICT LOT 2399 PEACE RIVER DISTRICT, EXCEPT THE SOUTH 25 METRES
760-042880.000	DISTRICT LOT 2428 PEACE RIVER DISTRICT
760-042949.000	DISTRICT LOT 2497 PEACE RIVER DISTRICT
760-042955.000	DISTRICT LOT 2503 PEACE RIVER DISTRICT, EXCEPT PARCEL A (O24416)
760-042955.005	PARCEL A (O24416) OF DISTRICT LOT 2503 PEACE RIVER DISTRICT
760-042956.000	THE EAST 1/2 OF DISTRICT LOT 2504 PEACE RIVER DISTRICT
760-042957.000	THE WEST 1/2 OF DISTRICT LOT 2504 PEACE RIVER DISTRICT

Folio Number	Legal Description
760-042959.000	DISTRICT LOT 2506 PEACE RIVER DISTRICT
760-042960.000	DISTRICT LOT 2507 PEACE RIVER DISTRICT EXCEPT PLAN EPP9427
760-042960.010	LOT 1 DISTRICT LOT 2507 PEACE RIVER DISTRICT PLAN EPP9427
760-042961.000	DISTRICT LOT 2508 PEACE RIVER DISTRICT
760-042962.000	DISTRICT LOT 2509 PEACE RIVER DISTRICT, EXCEPT THE WEST AND SOUTH 80 FEET
760-042964.000	DISTRICT LOT 2511 PEACE RIVER DISTRICT, EXCEPT PLAN 34298
760-042965.000	DISTRICT LOT 2512 PEACE RIVER DISTRICT, EXCEPT THE SOUTH 80 FEET
760-042966.100	LOT 1 DISTRICT LOT 2513 PEACE RIVER DISTRICT PLAN EPP7935
760-042967.000	DISTRICT LOT 2514 PEACE RIVER DISTRICT, EXCEPT PARCEL A (E6963)
760-042968.000	PARCEL A (E6963) OF DISTRICT LOT 2514 PEACE RIVER DISTRICT
760-042969.005	LOT 1 DISTRICT LOT 2515 PEACE RIVER DISTRICT PLAN 24326, EXCEPT PLAN 33027
760-042969.010	LOT 2 DISTRICT LOT 2515 PEACE RIVER DISTRICT PLAN 24326
760-042970.000	DISTRICT LOT 2516 PEACE RIVER DISTRICT, EXCEPT PLANS 21383, 21704, 24605 AND PGP44332
760-042970.100	LOT 1 DISTRICT LOT 2516 PEACE RIVER DISTRICT PLAN 21383
760-042970.105	LOT 1 DISTRICT LOT 2516 PEACE RIVER DISTRICT PLAN 24605
760-042970.110	LOT 2 DISTRICT LOT 2516 PEACE RIVER DISTRICT PLAN 24605
760-042970.115	LOT 3 DISTRICT LOT 2516 PEACE RIVER DISTRICT PLAN 24605
760-042970.120	LOT 4 DISTRICT LOT 2516 PEACE RIVER DISTRICT PLAN 24605
760-042970.125	LOT 5 DISTRICT LOT 2516 PEACE RIVER DISTRICT PLAN 24605
760-042970.150	LOT 2 DISTRICT LOT 2516 PEACE RIVER DISTRICT PLAN 21383
760-042971.000	BLOCK A DISTRICT LOT 2517 PEACE RIVER DISTRICT
760-042972.000	THE WEST 1/2 OF DISTRICT LOT 2517 PEACE RIVER DISTRICT EXCEPT PORTIONS IN : (1) PLAN 27503; (2) PLAN 28648; (3) PLAN PGP44816; (4) PLAN BCP4822; (5) PLAN EPP23337;
760-042972.005	LOT 1 DISTRICT LOT 2517 PEACE RIVER DISTRICT PLAN 27503
760-042972.050	LOT 1 DISTRICT LOT 2517 PEACE RIVER DISTRICT PLAN 28648
760-042972.055	LOT 2 DISTRICT LOT 2517 PEACE RIVER DISTRICT PLAN 28648
760-042972.060	LOT 3 DISTRICT LOT 2517 PEACE RIVER DISTRICT PLAN 28648
760-042972.070	LOT A DISTRICT LOT 2517 PEACE RIVER DISTRICT PLAN PGP44816
760-042972.080	LOT 1 DISTRICT LOT 2517 PEACE RIVER DISTRICT PLAN BCP4822
760-042972.090	LOT 2 DISTRICT LOT 2517 PEACE RIVER DISTRICT PLAN EPP23337
760-042972.095	LOT 3 DISTRICT LOT 2517 PEACE RIVER DISTRICT PLAN EPP23337
760-042974.005	LOT 1 DISTRICT LOT 2518 PEACE RIVER DISTRICT PLAN 22630
760-042974.015	LOT 1 DISTRICT LOT 2518 PEACE RIVER DISTRICT PLAN PGP44763
760-042974.025	LOT 2 DISTRICT LOT 2518 PEACE RIVER DISTRICT PLAN BCP44091
760-042974.030	LOT 3 DISTRICT LOT 2518 PEACE RIVER DISTRICT PLAN BCP44091
760-042974.050	LOT 1 DISTRICT LOT 2518 PEACE RIVER DISTRICT PLAN EPP97748
760-042974.070	LOT 3 DISTRICT LOT 2518 PEACE RIVER DISTRICT PLAN EPP97748
760-042974.080	LOT 4 DISTRICT LOT 2518 PEACE RIVER DISTRICT PLAN EPP97748
760-042974.200	LOT 2 DISTRICT LOT 2518 PEACE RIVER DISTRICT PLAN EPP50130
760-042974.300	LOT 3 DISTRICT LOT 2518 PEACE RIVER DISTRICT PLAN EPP50130
760-042974.400	LOT 4 DISTRICT LOT 2518 PEACE RIVER DISTRICT PLAN EPP50130
760-042974.500	LOT 5 DISTRICT LOT 2518 PEACE RIVER DISTRICT PLAN EPP50130
760-042974.600	LOT 6 DISTRICT LOT 2518 PEACE RIVER DISTRICT PLAN EPP50130
760-042974.700	LOT 7 DISTRICT LOT 2518 PEACE RIVER DISTRICT PLAN EPP50130
760-042975.000	LOT 1 DISTRICT LOT 2518 PEACE RIVER DISTRICT PLAN 18700

Folio Number	Legal Description
760-042976.000	LOT 2 DISTRICT LOT 2518 PEACE RIVER DISTRICT PLAN 18700
760-042977.000	DISTRICT LOT 2519 PEACE RIVER DISTRICT
760-042980.000	DISTRICT LOT 2521 PEACE RIVER DISTRICT
760-042982.000	THE SOUTH 1/2 OF DISTRICT LOT 2522 PEACE RIVER DISTRICT
760-042982.010	THE EAST 1/2 OF DISTRICT LOT 2523 PEACE RIVER DISTRICT EXCEPT PLAN EPP116590
760-042984.000	DISTRICT LOT 2525 PEACE RIVER DISTRICT, EXCEPT THE MOST SOUTHERLY 24.384 METRES IN PARALLEL WIDTH THEREOF
760-042987.100	PARCEL A DISTRICT LOTS 2528 3132 AND 3971 PEACE RIVER DISTRICT PLAN PGP41496
760-042988.000	DISTRICT LOT 2529 PEACE RIVER DISTRICT, EXCEPT THE SOUTH 80 FEET
760-042989.000	DISTRICT LOT 2530 PEACE RIVER DISTRICT
760-042992.000	DISTRICT LOT 2533 PEACE RIVER DISTRICT, EXCEPT THE SOUTH 25 METRES
760-042993.000	DISTRICT LOT 2534 PEACE RIVER DISTRICT, EXCEPT THE SOUTH 24.384 METRES
760-043012.000	DISTRICT LOT 2553 PEACE RIVER DISTRICT, EXCEPT THE SOUTH 24.384 METRES
760-043017.000	DISTRICT LOT 2558 PEACE RIVER DISTRICT, EXCEPT PLAN 23895
760-043044.000	DISTRICT LOT 2582 PEACE RIVER DISTRICT
760-043058.000	DISTRICT LOT 2597 PEACE RIVER DISTRICT EXCEPT THE MOST WESTERLY AND MOST SOUTHERLY 80 FEET IN PARALLEL WIDTHS THEREOF
760-043074.000	DISTRICT LOT 2613 PEACE RIVER DISTRICT
760-043077.000	DISTRICT LOT 2616 PEACE RIVER DISTRICT
760-043078.000	DISTRICT LOT 2617 PEACE RIVER DISTRICT
760-043080.100	LOT 1 DISTRICT LOT 3047 PEACE RIVER DISTRICT PLAN BCP36354
760-043094.000	DISTRICT LOT 2632 PEACE RIVER DISTRICT
760-043117.000	DISTRICT LOT 2654 PEACE RIVER DISTRICT EXCEPT THE SOUTH 80 FEET
760-043123.000	DISTRICT LOT 2660 PEACE RIVER DISTRICT
760-043123.800	LOT 1 DISTRICT LOT 2661 PEACE RIVER DISTRICT PLAN 34896
760-043126.000	DISTRICT LOT 2663 PEACE RIVER DISTRICT
760-043141.000	DISTRICT LOT 2678 PEACE RIVER DISTRICT
760-043154.005	DISTRICT LOT 2689 PEACE RIVER DISTRICT, EXCEPT THE MOST NORTHERLY AND WESTERLY 25 METRES IN PARALLEL WIDTH THEREOF
760-043161.000	LOT 1 DISTRICT LOT 2697 PEACE RIVER DISTRICT PLAN 34041
760-043162.000	DISTRICT LOT 2697 PEACE RIVER DISTRICT EXCEPT: PLAN 34041 AND PLAN BCP34681
760-043162.005	LOT A DISTRICT LOT 2697 PEACE RIVER DISTRICT PLAN BCP34681
760-043162.010	LOT B DISTRICT LOT 2697 PEACE RIVER DISTRICT PLAN BCP34681
760-043180.000	DISTRICT LOT 2707 PEACE RIVER DISTRICT EXCEPT THE MOST WESTERLY 24.384 METRES IN PARALLEL WIDTH THEREOF
760-043184.000	DISTRICT LOT 2711 PEACE RIVER DISTRICT EXCEPT THE SOUTH 80 FEET
760-043215.000	DISTRICT LOT 2742 PEACE RIVER DISTRICT
760-043216.000	DISTRICT LOT 2743 PEACE RIVER DISTRICT
760-043217.000	PARCEL A (M12165) OF DISTRICT LOT 2744 PEACE RIVER DISTRICT, EXCEPT PLAN 32646
760-043230.000	PARCEL A (O27268) OF DISTRICT LOT 2756 PEACE RIVER DISTRICT
760-043232.000	DISTRICT LOT 2758 PEACE RIVER DISTRICT
760-043233.000	DISTRICT LOT 2759 PEACE RIVER DISTRICT EXCEPT PLAN 22839
760-043234.010	LOT 1 DISTRICT LOT 2760 PEACE RIVER DISTRICT PLAN 21312
760-043234.020	LOT 2 DISTRICT LOT 2760 PEACE RIVER DISTRICT PLAN 21312
760-043235.100	LOT 1 DISTRICT LOT 2761 PEACE RIVER DISTRICT PLAN BCP19199
760-043236.000	DISTRICT LOT 2762 PEACE RIVER DISTRICT

Folio Number	Legal Description
760-043242.010	LOT 1 DISTRICT LOT 2768 PEACE RIVER DISTRICT PLAN PGP35384
760-043242.020	LOT 2 DISTRICT LOT 2768 PEACE RIVER DISTRICT PLAN PGP35384
760-043242.030	LOT 3 DISTRICT LOT 2768 PEACE RIVER DISTRICT PLAN PGP35384
760-043242.040	LOT 4 DISTRICT LOT 2768 PEACE RIVER DISTRICT PLAN PGP35384
760-043242.050	LOT 1 DISTRICT LOT 2768 PEACE RIVER DISTRICT PLAN EPP3482
760-043242.060	LOT 2 DISTRICT LOT 2768 PEACE RIVER DISTRICT PLAN EPP3482
760-043242.070	LOT 3 DISTRICT LOT 2768 PEACE RIVER DISTRICT PLAN EPP3482
760-043242.080	LOT 4 DISTRICT LOT 2768 PEACE RIVER DISTRICT PLAN EPP3482
760-043244.000	DISTRICT LOT 2770 PEACE RIVER DISTRICT
760-043246.000	DISTRICT LOT 2772 PEACE RIVER DISTRICT EXCEPT THE SOUTH 80 FEET
760-043247.000	DISTRICT LOT 2773 PEACE RIVER DISTRICT EXCEPT THE WEST 30 METRES AND PLAN 34896
760-043249.000	DISTRICT LOT 2775 PEACE RIVER DISTRICT
760-043259.000	DISTRICT LOT 2785 PEACE RIVER DISTRICT, EXCEPT PARCEL A (R45393) AND THE WEST 80 FEET
760-043259.010	PARCEL A (R45393) OF DISTRICT LOT 2785 PEACE RIVER DISTRICT
760-043260.000	DISTRICT LOT 2786 PEACE RIVER DISTRICT
760-043261.000	LOT 1 DISTRICT LOT 2787 PEACE RIVER DISTRICT PLAN 17404
760-043262.000	LOT 2 DISTRICT LOT 2787 PEACE RIVER DISTRICT PLAN 17404, EXCEPT PLAN PGP43081
760-043262.100	LOT A DISTRICT LOT 2787 PEACE RIVER DISTRICT PLAN PGP43081
760-043262.200	LOT B DISTRICT LOT 2787 PEACE RIVER DISTRICT PLAN PGP43081
760-043263.000	LOT 3 DISTRICT LOT 2787 PEACE RIVER DISTRICT PLAN 17404
760-043264.050	LOT A DISTRICT LOT 2787 PEACE RIVER DISTRICT PLAN EPP107048
760-043266.015	LOT A DISTRICT LOT 2788 PEACE RIVER DISTRICT PLAN 26003
760-043266.200	LOT B DISTRICT LOT 2788 PEACE RIVER DISTRICT PLAN EPP53941
760-043266.300	LOT C DISTRICT LOT 2788 PEACE RIVER DISTRICT PLAN EPP53941
760-043267.050	LOT 1 DISTRICT LOT 2788 PEACE RIVER DISTRICT PLAN EPP109458
760-043268.000	LOT 3 DISTRICT LOT 2788 PEACE RIVER DISTRICT PLAN 19112
760-043269.041	LOT A DISTRICT LOT 2788 PEACE RIVER DISTRICT PLAN EPP72429
760-043269.050	LOT 2 DISTRICT LOT 2788 PEACE RIVER DISTRICT PLAN EPP19333
760-043270.000	LOT 5 DISTRICT LOT 2788 PEACE RIVER DISTRICT PLAN 19112
760-043271.000	LOT 6 DISTRICT LOT 2788 PEACE RIVER DISTRICT PLAN 19112
760-043272.000	LOT 7 DISTRICT LOT 2788 PEACE RIVER DISTRICT PLAN 19112
760-043273.000	LOT 8 DISTRICT LOT 2788 PEACE RIVER DISTRICT PLAN 19112
760-043274.000	LOT 1 DISTRICT LOT 2788 PEACE RIVER DISTRICT PLAN 23129
760-043274.005	LOT 2 DISTRICT LOT 2788 PEACE RIVER DISTRICT PLAN 23129
760-043274.100	LOT 1 DISTRICT LOT 2788 PEACE RIVER DISTRICT PLAN 24397
760-043274.105	LOT 2 DISTRICT LOT 2788 PEACE RIVER DISTRICT PLAN 24397
760-043275.000	DISTRICT LOT 2789 PEACE RIVER DISTRICT EXCEPT PLANS 27748, 31991, PGP35166 AND EPP11348
760-043275.100	LOT 1 DISTRICT LOT 2789 PEACE RIVER DISTRICT PLAN 27748
760-043275.105	LOT 2 DISTRICT LOT 2789 PEACE RIVER DISTRICT PLAN 27748
760-043275.110	LOT 3 DISTRICT LOT 2789 PEACE RIVER DISTRICT PLAN 27748
760-043275.200	LOT 1 DISTRICT LOT 2789 PEACE RIVER DISTRICT PLAN 31991
760-043275.210	LOT 1 DISTRICT LOT 2789 PEACE RIVER DISTRICT PLAN EPP11348
760-043275.220	LOT 2 DISTRICT LOT 2789 PEACE RIVER DISTRICT PLAN EPP11348

Folio Number	Legal Description
760-043275.230	LOT 3 DISTRICT LOT 2789 PEACE RIVER DISTRICT PLAN EPP11348
760-043275.240	LOT 4 DISTRICT LOT 2789 PEACE RIVER DISTRICT PLAN EPP11348
760-043275.500	LOT 1 DISTRICT LOT 2789 PEACE RIVER DISTRICT PLAN PGP35166
760-043275.510	LOT 2 DISTRICT LOT 2789 PEACE RIVER DISTRICT PLAN PGP35166
760-043275.520	LOT 3 DISTRICT LOT 2789 PEACE RIVER DISTRICT PLAN PGP35166
760-043311.010	BLOCK A DISTRICT LOT 2812 PEACE RIVER DISTRICT
760-043318.000	DISTRICT LOT 2819 PEACE RIVER DISTRICT
760-043330.000	DISTRICT LOT 2831 PEACE RIVER DISTRICT EXCEPT THE SOUTH 80 FEET
760-043331.000	DISTRICT LOT 2832 PEACE RIVER DISTRICT, EXCEPT THE SOUTH 80 FEET
760-043374.000	THE SOUTH EAST 1/4 OF DISTRICT LOT 2871 PEACE RIVER DISTRICT, EXCEPT THE SOUTH 80 FEET
760-043375.000	DISTRICT LOT 2872 PEACE RIVER DISTRICT, EXCEPT THE SOUTH 80 FEET
760-043377.000	THE SOUTH WEST 1/4 OF DISTRICT LOT 2873 PEACE RIVER DISTRICT EXCEPT THE SOUTH 24.384 METRES
760-043379.000	DISTRICT LOT 2874 PEACE RIVER DISTRICT
760-043417.000	DISTRICT LOT 2910 PEACE RIVER DISTRICT
760-043418.000	DISTRICT LOT 2911 PEACE RIVER DISTRICT
760-043419.000	DISTRICT LOT 2912 PEACE RIVER DISTRICT
760-043433.000	DISTRICT LOT 2926 PEACE RIVER DISTRICT, EXCEPT PLAN PGP39272
760-043449.000	DISTRICT LOT 2945 PEACE RIVER DISTRICT
760-043451.000	DISTRICT LOT 2947 PEACE RIVER DISTRICT, EXCEPT THE SOUTH 80 FEET AND PLAN 23895
760-043461.100	LOT 1 DISTRICT LOT 2955 PEACE RIVER DISTRICT PLAN EPP48363
760-043462.000	DISTRICT LOT 2956 PEACE RIVER DISTRICT, EXCEPT THE EAST 80 FEET AND PLAN PGP36912
760-043480.000	DISTRICT LOT 2973 PEACE RIVER DISTRICT, EXCEPT THE SOUTH 24.384 METRES IN PARALLEL WIDTH THEREOF
760-043481.005	THE NORTH 1/2 OF DISTRICT LOT 2974 PEACE RIVER DISTRICT EXCEPT THE WEST 24.384 METRES
760-043482.000	PARCEL A (T16346) OF DISTRICT LOT 2975 PEACE RIVER DISTRICT
760-043487.000	THE NORTH EAST 1/4 OF DISTRICT LOT 2979 PEACE RIVER DISTRICT
760-043487.150	BLOCK B DISTRICT LOT 2979 AND 3987 PEACE RIVER DISTRICT
760-043493.000	LOT 2 DISTRICT LOT 2985 PEACE RIVER DISTRICT PLAN BCP36450
760-043504.000	DISTRICT LOT 2997 PEACE RIVER DISTRICT
760-043511.000	PARCEL A (O26086) OF DISTRICT LOT 3004 PEACE RIVER DISTRICT
760-043515.000	PARCEL A (P5748) OF DISTRICT LOT 3008 PEACE RIVER DISTRICT
760-043519.000	DISTRICT LOT 3012 PEACE RIVER DISTRICT EXCEPT THE MOST WESTERLY AND THE MOST SOUTHERLY 80 FEET IN PARALLEL WIDTHS THEREOF
760-043605.500	BLOCK A DISTRICT LOT 3096 PEACE RIVER DISTRICT
760-043644.000	PARCEL A (R35318) OF DISTRICT LOT 3136 PEACE RIVER DISTRICT
760-043656.050	BLOCK A DISTRICT LOT 3148 PEACE RIVER DISTRICT
760-043657.000	DISTRICT LOT 3149 PEACE RIVER DISTRICT
760-043660.000	DISTRICT LOT 3152 PEACE RIVER DISTRICT
760-043666.200	BLOCK B DISTRICT LOT 3157 PEACE RIVER DISTRICT PLAN PGP45020
760-043668.000	DISTRICT LOT 3159 PEACE RIVER DISTRICT
760-043669.120	LOT 2 DISTRICT LOT 3160 PEACE RIVER DISTRICT PLAN BCP23214
760-043728.010	LOT 3 DISTRICT LOT 3221 PEACE RIVER DISTRICT PLAN 22745
760-043728.015	LOT 4 DISTRICT LOT 3221 PEACE RIVER DISTRICT PLAN 22745

Folio Number	Legal Description
760-043728.030	LOT 7 DISTRICT LOT 3221 PEACE RIVER DISTRICT PLAN 22745
760-043728.040	LOT 9 DISTRICT LOT 3221 PEACE RIVER DISTRICT PLAN 22745
760-043728.045	DISTRICT LOT 4146 PEACE RIVER DISTRICT
760-043792.200	LOT 2 DISTRICT LOT 3276 PEACE RIVER DISTRICT PLAN BCP16407
760-043847.000	DISTRICT LOT 3297 PEACE RIVER DISTRICT
760-043848.000	LOT 1 DISTRICT LOT 3298 PEACE RIVER DISTRICT PLAN 26536
760-043848.005	LOT 2 DISTRICT LOT 3298 PEACE RIVER DISTRICT PLAN 26536
760-043848.010	LOT 3 DISTRICT LOT 3298 PEACE RIVER DISTRICT PLAN 26536
760-043848.015	LOT 4 DISTRICT LOT 3298 PEACE RIVER DISTRICT PLAN 26536
760-043848.020	LOT 5 DISTRICT LOT 3298 PEACE RIVER DISTRICT PLAN 26536
760-043848.025	LOT 6 DISTRICT LOT 3298 PEACE RIVER DISTRICT PLAN 26536
760-043848.031	LOT 1 DISTRICT LOT 3298 PEACE RIVER DISTRICT PLAN BCP19814
760-043848.032	LOT 2 DISTRICT LOT 3298 PEACE RIVER DISTRICT PLAN BCP19814
760-043848.035	LOT 8 DISTRICT 3298 PEACE RIVER DISTRICT PLAN 26536
760-043848.050	LOT 11 DISTRICT LOT 3298 PEACE RIVER DISTRICT PLAN 26536
760-043848.065	LOT 14 DISTRICT LOT 3298 PEACE RIVER DISTRICT PLAN 26536
760-043848.075	LOT 16 DISTRICT LOT 3298 PEACE RIVER DISTRICT PLAN 26536
760-043848.080	LOT 17 DISTRICT LOT 3298 PEACE RIVER DISTRICT PLAN 26536
760-043848.085	LOT 18 DISTRICT LOT 3298 PEACE RIVER DISTRICT PLAN 26536
760-043848.090	LOT 19 DISTRICT LOT 3298 PEACE RIVER DISTRICT PLAN 26536
760-043848.095	LOT 20 DISTRICT LOT 3298 PEACE RIVER DISTRICT PLAN 26536
760-043848.100	LOT 21 DISTRICT LOT 3298 PEACE RIVER DISTRICT PLAN 26536
760-043848.106	LOT A DISTRICT LOT 3298 PEACE RIVER DISTRICT PLAN EPP58076
760-043848.107	LOT B DISTRICT LOT 3298 PEACE RIVER DISTRICT PLAN EPP58076
760-043848.108	LOT C DISTRICT LOT 3298 PEACE RIVER DISTRICT PLAN EPP58076
760-043848.111	LOT 1 DISTRICT LOT 3298 PEACE RIVER DISTRICT PLAN BCP20569
760-043848.112	LOT 2 DISTRICT LOT 3298 PEACE RIVER DISTRICT PLAN BCP20569
760-043900.010	PARCEL A DISTRICT LOTS 3277 AND 3417 PEACE RIVER DISTRICT PLAN 32104
760-043904.000	DISTRICT LOT 4155 PEACE RIVER DISTRICT
760-045150.080	PARCEL A DISTRICT LOTS 3964 AND 4013 PEACE RIVER DISTRICT PLAN PGP46662
760-045197.400	DISTRICT LOT 4064 PEACE RIVER DISTRICT
760-099709.143	DISTRICT LOT 4455 PEACE RIVER DISTRICT
760-200427.700	DISTRICT LOT 4077 PEACE RIVER DISTRICT
760-206120.000	THAT PART OF UNSURVEYED CROWN LAND WITHIN PEACE RIVER DISTRICT SHOWN AS AREA 1 ON PLAN PGP44901
760-206669.005	THAT PART OF UNSURVEYED CROWN LAND WITHIN PEACE RIVER DISTRICT AS SHOWN ON PLAN PGP44413
760-206837.000	THAT PART OF UNSURVEYED CROWN LAND WITHIN PEACE RIVER DISTRICT SHOWN AS AREA 9 ON PLAN PGP44221
760-209259.000	THAT PART OF UNSURVEYED CROWN LAND WITHIN PEACE RIVER DISTRICT AS SHOWN AS AREA 2 ON PLAN PGP47213
760-209334.000	THAT PART OF UNSURVEYED CROWN LAND WITHIN PEACE RIVER DISTRICT SHOWN AS AREA 1 ON PLAN PGP45057
760-041954.019	DISTRICT LOT 1713 LAND DISTRICT 44
760-042737.005	SECTION 8 RANGE 23 MERIDIAN W6 PLAN NUMBER PGP34187 LAND DISTRICT 44 TOWNSHIP 88
760-042758.011	REGIONAL DISTRICT 22

Folio Number	Legal Description
760-042762.001	REGIONAL DISTRICT 22
760-042772.001	LAND DISTRICT 44
760-042799.001	DISTRICT LOT 2359
760-042808.001	REGIONAL DISTRICT 22
760-042818.002	LAND DISTRICT 44
760-042831.001	REGIONAL DISTRICT 22
760-042955.006	LAND DISTRICT 44
760-042982.011	REGIONAL DISTRICT 22
760-042989.001	LAND DISTRICT 44
760-043235.101	REGIONAL DISTRICT 22
760-043266.020	LAND DISTRICT 44
760-043331.001	LAND DISTRICT 44
760-043369.000	DISTRICT LOT 2867 LAND DISTRICT 44
760-043369.500	LAND DISTRICT 44
760-043493.001	REGIONAL DISTRICT 22
760-043668.001	DISTRICT LOT 3159 LAND DISTRICT 44
760-045183.900	DISTRICT LOT 4014 LAND DISTRICT 44
760-050236.000	LAND DISTRICT 44
760-053051.000	LAND DISTRICT 44
760-058015.693	LAND DISTRICT 44
760-059000.623	LAND DISTRICT 44
760-059630.502	LAND DISTRICT 44
760-059630.967	LAND DISTRICT 44
760-059638.855	LAND DISTRICT 44
760-059639.692	LAND DISTRICT 44
760-059640.002	LAND DISTRICT 44
760-059640.203	LAND DISTRICT 44
760-059641.605	LAND DISTRICT 44
760-059642.163	LAND DISTRICT 44
760-074930.024	SECTION 34 RANGE 18 MERIDIAN W6 LAND DISTRICT 44 TOWNSHIP 86
760-074930.232	DISTRICT LOT 2742 LAND DISTRICT 44
760-074930.248	SECTION 22 RANGE 24 LAND DISTRICT 44 TOWNSHIP 82
760-074930.251	SECTION 6 RANGE 15 LAND DISTRICT 44 TOWNSHIP 88
760-074930.365	BLOCK A DISTRICT LOT 2517 LAND DISTRICT 44
760-074930.439	SECTION 9 RANGE 23 LAND DISTRICT 44 TOWNSHIP 83
760-074930.480	LOT B DISTRICT LOT 2343 LAND DISTRICT 44
760-074930.496	LAND DISTRICT 44
760-074930.512	DISTRICT LOT 661 LAND DISTRICT 44
760-074930.515	DISTRICT LOT 532 LAND DISTRICT 44
760-074930.536	SECTION 21 RANGE 18 MERIDIAN W6 LAND DISTRICT 44 TOWNSHIP 88
760-074930.561	SECTION 32 LAND DISTRICT 44 TOWNSHIP 111
760-074930.622	SECTION 25 RANGE 19 MERIDIAN W6 LAND DISTRICT 44 TOWNSHIP 88
760-074930.636	REGIONAL DISTRICT 22
760-074930.646	SECTION 6 RANGE 15 MERIDIAN W6 LAND DISTRICT 44 TOWNSHIP 88
760-074930.650	SECTION 6 RANGE 15 LAND DISTRICT 44 TOWNSHIP 88
760-074930.658	DISTRICT LOT 2503 LAND DISTRICT 44

Folio Number	Legal Description
760-074930.659	DISTRICT LOT 2081 LAND DISTRICT 44
760-074930.662	DISTRICT LOT 532 LAND DISTRICT 44
760-074930.689	SECTION 13 & 24 RANGE 25 MERIDIAN W6 PLAN NUMBER PGP27936 LAND DISTRICT 44 TOWNSHIP 83
760-074930.694	PLAN NUMBER PGP41496 DISTRICT LOT 2528 LAND DISTRICT 44
760-074930.700	DISTRICT LOT 2333 LAND DISTRICT 44
760-074930.705	SECTION 12 RANGE 16 MERIDIAN W6 LAND DISTRICT 44 TOWNSHIP 88
760-074930.712	DISTRICT LOT 2368 LAND DISTRICT 44
760-074930.719	LOT 2 PLAN NUMBER PGP21312 DISTRICT LOT 2760 LAND DISTRICT 44
760-074930.720	DISTRICT LOT 2390 LAND DISTRICT 44
760-074930.733	LOT 6 PLAN NUMBER PGP 19112 DISTRICT LOT 2788 LAND DISTRICT 44
760-074930.736	DISTRICT LOT 2330 LAND DISTRICT 44
760-074930.743	DISTRICT LOT 2259 LAND DISTRICT 44
760-074930.760	DISTRICT LOT 2343 LAND DISTRICT 44
760-074930.764	DISTRICT LOT 2360 LAND DISTRICT 44
760-074930.777	DISTRICT LOT 2339 LAND DISTRICT 44
760-074930.780	LOT 1 PLAN NUMBER EPP43598 DISTRICT LOT 698 LAND DISTRICT 44
760-074930.800	LAND DISTRICT 44
760-074930.807	DISTRICT LOT 2654 LAND DISTRICT 44
760-074930.820	SECTION 10 RANGE 18 LAND DISTRICT 44 TOWNSHIP 86
760-074930.823	LAND DISTRICT 44
760-074930.826	DISTRICT LOT 2342 LAND DISTRICT 44
760-099000.532	SECTION 10 RANGE 23 MERIDIAN W6 LAND DISTRICT 44 TOWNSHIP 88
760-099707.703	LAND DISTRICT 44
760-099707.840	LAND DISTRICT 44
760-099708.074	LAND DISTRICT 44
760-099708.977	LAND DISTRICT 44
760-200322.720	LAND DISTRICT 44
760-200707.700	LAND DISTRICT 44
760-201469.710	LAND DISTRICT 44
760-201469.715	LAND DISTRICT 44
760-201488.000	LAND DISTRICT 44
760-202022.700	SECTION 19 RANGE 23 MERIDIAN W6 LAND DISTRICT 44 TOWNSHIP 88
760-202360.700	SECTION 19 RANGE 23 MERIDIAN W6 LAND DISTRICT 44 TOWNSHIP 87
760-202576.700	LAND DISTRICT 44
760-202576.703	LAND DISTRICT 44
760-202947.700	SECTION 26 RANGE 24 MERIDIAN W6 PLAN EPP 75946 LAND DISTRICT 44 TOWNSHIP 88
760-204931.700	LAND DISTRICT 44
760-205004.000	PLAN NUMBER PGP30687 LAND DISTRICT 44
760-205004.010	LAND DISTRICT 44
760-207249.100	LAND DISTRICT 44
760-207255.030	LAND DISTRICT 44
760-207375.700	LAND DISTRICT 44
760-208073.700	LAND DISTRICT 44
760-208423.720	SECTION 12 RANGE 15 MERIDIAN W6 LAND DISTRICT 44 TOWNSHIP 88
760-210702.000	LAND DISTRICT 44

Folio Number	Legal Description
760-212431.700	LAND D PEACE RIVER LAND DISTRICT, CAMPSITE, NTS:C-17-I/94-H-1, LEASE/PERMIT/LICENCE # 939383DISTRICT 44
760-213587.000	LAND DISTRICT 44
760-213968.000	LAND DISTRICT 44
760-214952.720	LAND DISTRICT 44
760-223971.000	LAND DISTRICT 44
760-224232.720	PLAN NUMBER EPP2227 LAND DISTRICT 44
760-226894.000	LAND DISTRICT 44
760-226960.000	SECTION 20 RANGE 24 MERIDIAN W6 PLAN NUMBER EPP24586 LAND DISTRICT 44 TOWNSHIP 84
760-227128.000	PLAN NUMBER EPP22242 LAND DISTRICT 44
760-231821.700	LAND DISTRICT 44
760-237395.700	LAND DISTRICT 44
760-099000.700	LAND DISTRICT 44
760-229413.700	LAND DISTRICT 44
760-225587.700	PLAN EPP19977, LEGAL SUBDIVISION 2, SECTION 29, TOWNSHIP 83, RANGE 25, MERIDIAN W6, PEACE RIVER LAND DISTRICT, PORTION AREA 1, FARRELL CREEK CORE RD - CAMPSITE
760-408015.688	PEACE RIVER LAND DISTRICT, INDUSTRIAL CAMP IN VICINITY OF THE MILLIGAN CREEK RD (WITHIN UNIT 91 BLK F & UNIT 82 BLK B, 94-H-02), CONTAINING 1.91 HA +/-, LEASE/PERMIT/LICENCE # 816102
760-001453.000	BLOCK A, PART N1/2, SECTION 26, TOWNSHIP 113, PEACE RIVER LAND DISTRICT, MANUFACTURED HOME REG.# 86182
760-007246.000	PART W1/2, SECTION 12, TOWNSHIP 86, RANGE 17, MERIDIAN W6, PEACE RIVER LAND DISTRICT
760-001490.000	PART NE1/4, SECTION 3, TOWNSHIP 115, PEACE RIVER LAND DISTRICT
760-009209.000	PART NW1/4, SECTION 36, TOWNSHIP 87, RANGE 18, MERIDIAN W6, PEACE RIVER LAND DISTRICT
760-040890.000	DISTRICT LOT 688, PEACE RIVER LAND DISTRICT
760-001541.000	SECTION 8, TOWNSHIP 119, PEACE RIVER LAND DISTRICT, PETROLEUM FACILITY LOCATED HEREON (WA 08674) & (WA 14983)
760-001358.000	PART SW1/4, SECTION 6, TOWNSHIP 112, PEACE RIVER LAND DISTRICT
760-001356.000	PART NW1/4, SECTION 6, TOWNSHIP 112, PEACE RIVER LAND DISTRICT, MANUFACTURED HOME REG.# 82382
760-001503.000	SECTION 8, TOWNSHIP 115, PEACE RIVER LAND DISTRICT, EX MOST ELY 80 FT
760-042286.600	LOT 1, PLAN BCP9991, DISTRICT LOT 1948, PEACE RIVER LAND DISTRICT, PREV PT OF 042286.500
760-043687.300	LOT 3, PLAN PGP47911, DISTRICT LOT 3181, PEACE RIVER LAND DISTRICT, FORMERLY 760-043687.000
760-043687.500	LOT 5, PLAN PGP47911, DISTRICT LOT 3181, PEACE RIVER LAND DISTRICT, EXCEPT PLAN BCP47911, FORMERLY 760-043687.500
760-043640.000	BLOCK A, DISTRICT LOT 3132, PEACE RIVER LAND DISTRICT, EX MOST SLY 25 M
760-004832.000	SECTION 35, TOWNSHIP 87, RANGE 15, MERIDIAN W6, PEACE RIVER LAND DISTRICT, EX MOST WLY & SLY 80 FT PETROLEUM FACILITY LOCATED HEREON (WA 01200), (WA 22893) & (WA 24271), MANUFACTURED HOME REG.# 22093
760-003506.000	PART S1/2, SECTION 27, TOWNSHIP 86, RANGE 14, MERIDIAN W6, PEACE RIVER LAND DISTRICT, PETROLEUM FACILITIES LOCATED HEREON (WA 04466)

Folio Number	Legal Description
760-003488.000	PART SE1/4, SECTION 18, TOWNSHIP 86, RANGE 14, MERIDIAN W6, PEACE RIVER LAND DISTRICT, EX MOST SLY 99'
760-003487.000	PART N1/2, SECTION 18, TOWNSHIP 86, RANGE 14, MERIDIAN W6, PEACE RIVER LAND DISTRICT
760-001233.000	PART NE1/4, SECTION 16, TOWNSHIP 110, PEACE RIVER LAND DISTRICT, PETROLEUM FACILITY LOCATED HEREON (WA 11550)
760-001206.000	PART NE1/4, SECTION 4, TOWNSHIP 110, PEACE RIVER LAND DISTRICT, THE NE 1/4 OF SECTION 4, MANUFACTURED HOME REG.# 38853
760-001218.000	PART SE1/4, SECTION 9, TOWNSHIP 110, MERIDIAN W6, PEACE RIVER LAND DISTRICT, EXC SLY 25 METRES
760-001232.000	PART SW1/4, SECTION 15, TOWNSHIP 110, PEACE RIVER LAND DISTRICT
760-001302.000	SECTION 25, TOWNSHIP 111, PEACE RIVER LAND DISTRICT, EXCEPT PLAN EPP35648
760-001320.000	PART NW1/4, SECTION 34, TOWNSHIP 111, PEACE RIVER LAND DISTRICT
760-001324.000	PART NW1/4, SECTION 35, TOWNSHIP 111, PEACE RIVER LAND DISTRICT, EXC MOST NLY 66 FT
760-001326.000	PART NE1/4, SECTION 36, TOWNSHIP 111, PEACE RIVER LAND DISTRICT, EXCEPT PLAN PGP32010, PETROLEUM FACILITY LOCATED HEREON (760-200065.751 & 200065.700)
760-001354.000	PART S1/2, SECTION 5, TOWNSHIP 112, PEACE RIVER LAND DISTRICT, EXCEPT PLAN PGP43769, PETROLEUM FACILITIES LOCATED HEREON (WA 07472), (WA 09442), (WA 16136), (WA 16135) EXC MBH 95116 SEE 074930.726, MANUFACTURED HOME REG.# 95116
760-001360.000	PART E1/2, SECTION 8, TOWNSHIP 112, PEACE RIVER LAND DISTRICT, PETROLEUM FACILITY LOCATED HEREON (WA 09204),(WA 16174),(WA 19775),(WA 01508)
760-001409.000	PART SE1/4, SECTION 4, TOWNSHIP 113, PEACE RIVER LAND DISTRICT, FRAC
760-001421.000	PART E1/2, SECTION 10, TOWNSHIP 113, PEACE RIVER LAND DISTRICT
760-001439.000	PART SE1/4, SECTION 19, TOWNSHIP 113, PEACE RIVER LAND DISTRICT, EXC MOST SLY & ELY 82 FT - PETROLEUM FACILITIES HEREON WA3992 & WA23034 & S PORTION OF MAINTENANCE AREA (203992.025)
760-001442.000	PART NW1/4, SECTION 20, TOWNSHIP 113, PEACE RIVER LAND DISTRICT, PETROLEUM FACILITY HEREON (WA 06872), (WA 19759) & AREA 1 OF (WA 17980)
760-001473.000	PART S1/2, SECTION 33, TOWNSHIP 113, PEACE RIVER LAND DISTRICT, PETROLEUM FACILITY LOCATED HEREON (WA 02693)
760-001493.000	PART NE1/4, SECTION 4, TOWNSHIP 115, PEACE RIVER LAND DISTRICT
760-001509.000	PART SE1/4, SECTION 10, TOWNSHIP 115, PEACE RIVER LAND DISTRICT
760-001540.000	SECTION 7, TOWNSHIP 119, PEACE RIVER LAND DISTRICT, EXCEPT PLAN PGP39272
760-003467.000	PART NW1/4, SECTION 7, TOWNSHIP 86, RANGE 14, MERIDIAN W6, PEACE RIVER LAND DISTRICT, MANUFACTURED HOME REG.# 40117
760-003472.000	PART E1/2, SECTION 9, TOWNSHIP 86, RANGE 14, MERIDIAN W6, PEACE RIVER LAND DISTRICT, PETROLEUM FACILITY LOCATED HEREON (WA 10706)
760-003483.000	PART W1/2, SECTION 16, TOWNSHIP 86, RANGE 14, MERIDIAN W6, PEACE RIVER LAND DISTRICT
760-042803.000	DISTRICT LOT 2363 PEACE RIVER DISTRICT, EXCEPT THE WEST 25 METRES
760-001201.000	PART SW1/4, SECTION 3, TOWNSHIP 110, PEACE RIVER LAND DISTRICT
760-001213.000	PART NE1/4, SECTION 8, TOWNSHIP 110, PEACE RIVER LAND DISTRICT
760-001496.000	PART NE1/4, SECTION 5, TOWNSHIP 115, PEACE RIVER LAND DISTRICT, EX MOST ELY 80 FT
760-040582.001	DISTRICT LOT 479, PEACE RIVER LAND DISTRICT, EXC NE 1/4
760-040674.000	DISTRICT LOT 531, PEACE RIVER LAND DISTRICT, MILE 147 ALASKA HIGHWAY

Folio Number	Legal Description
760-041128.000	DISTRICT LOT 920, PEACE RIVER LAND DISTRICT
760-041459.000	DISTRICT LOT 1243, PEACE RIVER LAND DISTRICT
760-041482.000	DISTRICT LOT 1265, PEACE RIVER LAND DISTRICT, EX MOST SLY 80 FT & MOST WLY 80 FT, MANUFACTURED HOME REG.# 11383
760-041606.000	DISTRICT LOT 1371, PEACE RIVER LAND DISTRICT, EXCEPT PLAN PGP28971, MILE 147 ALASKA HWY; PETROLEUM FACILITY LOCATED HEREON (WA 23040) + (041606.100 - INDUSTRIAL CAMP)
760-042490.500	LOT 1, PLAN EPP58765, DISTRICT LOT 4140, PEACE RIVER LAND DISTRICT, & DL 4253