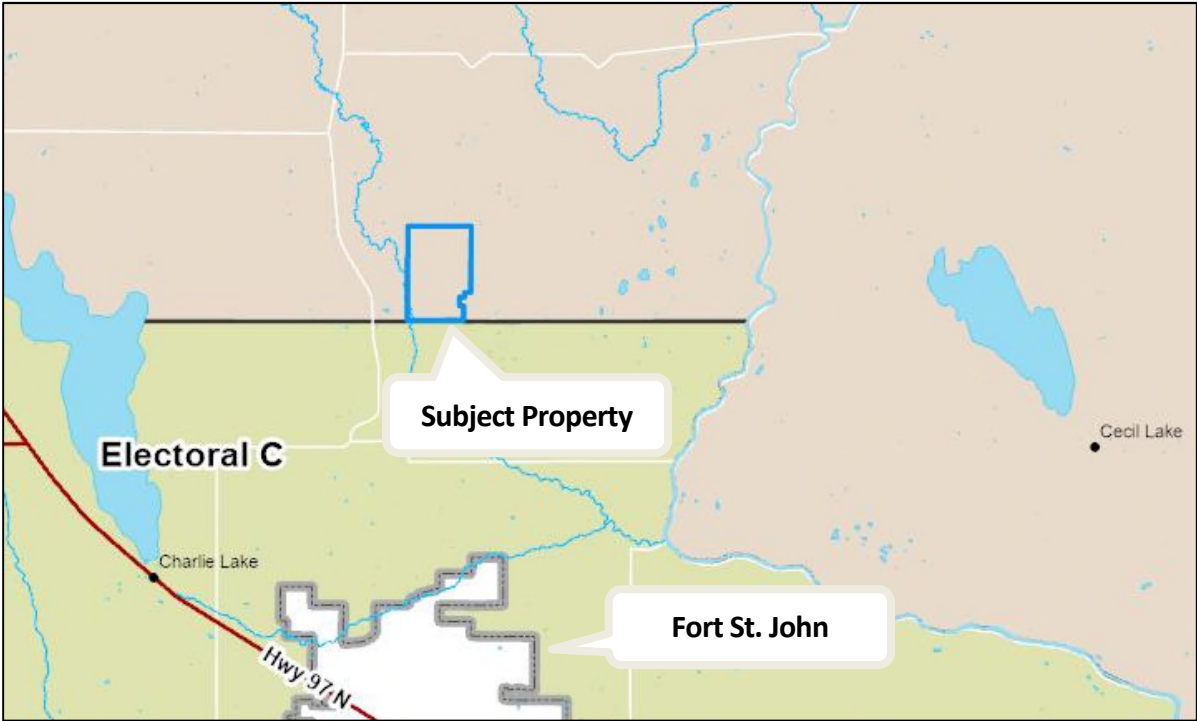
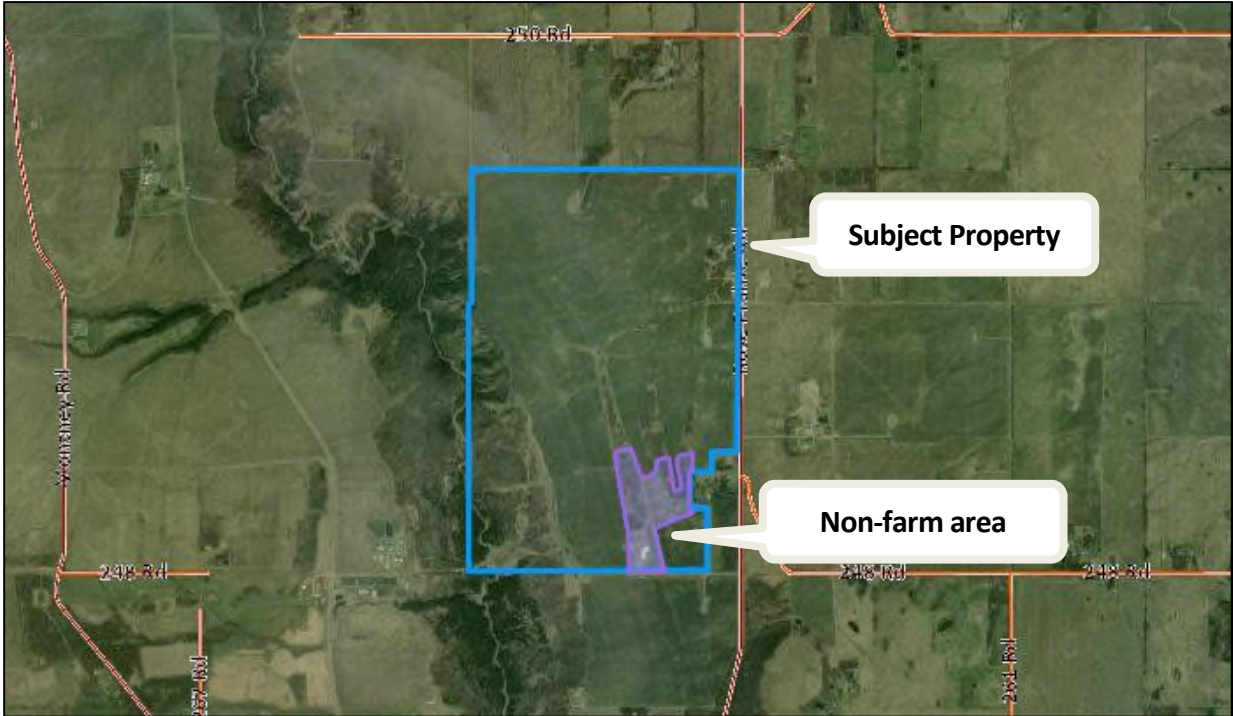


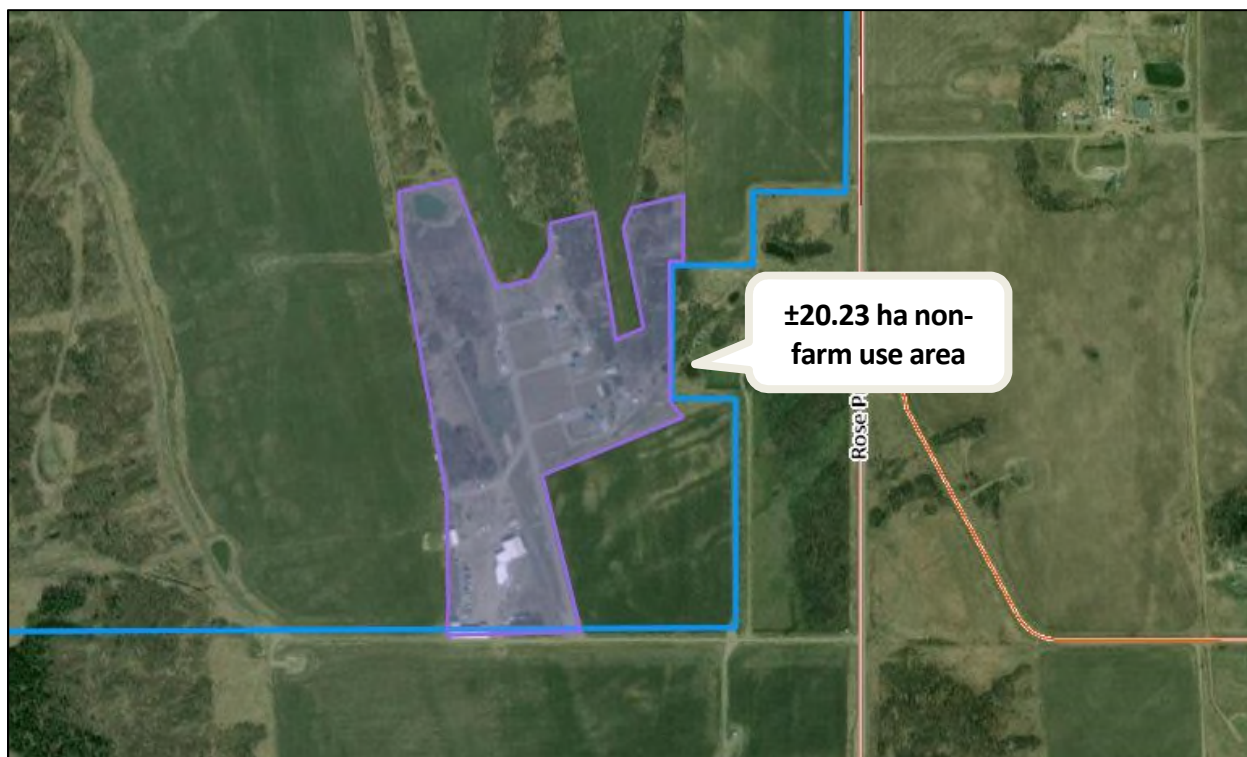
Location: Pineview area



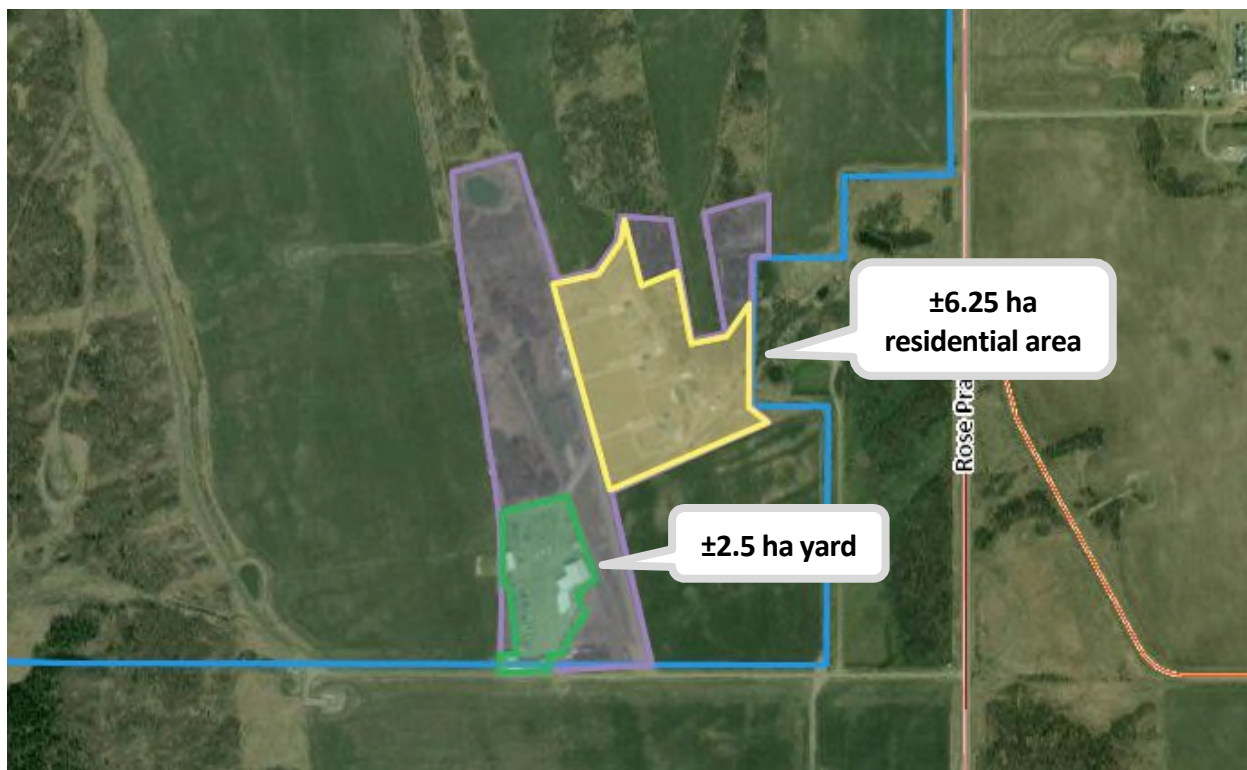
Aerial imagery



Aerial imagery: ± 20.23 ha non-farm use area



Aerial imagery: ± 6.25 ha residential area and the ± 2.5 ha yard



Aerial imagery: ± 6.25 ha residential area



Aerial imagery: ± 2.5 ha yard



Aerial imagery: Shops and Quonset



Aerial imagery: Size Estimates of Shop 1 and Quonset



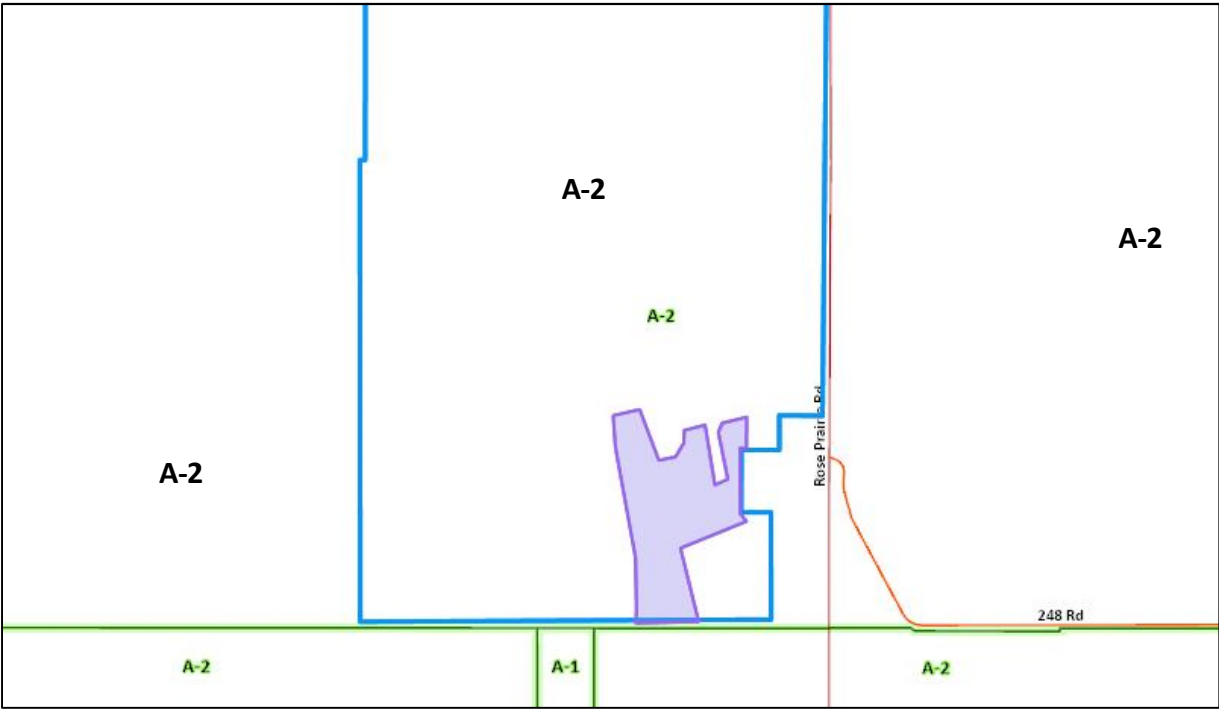
Aerial imagery: Size Estimates of Shop 2



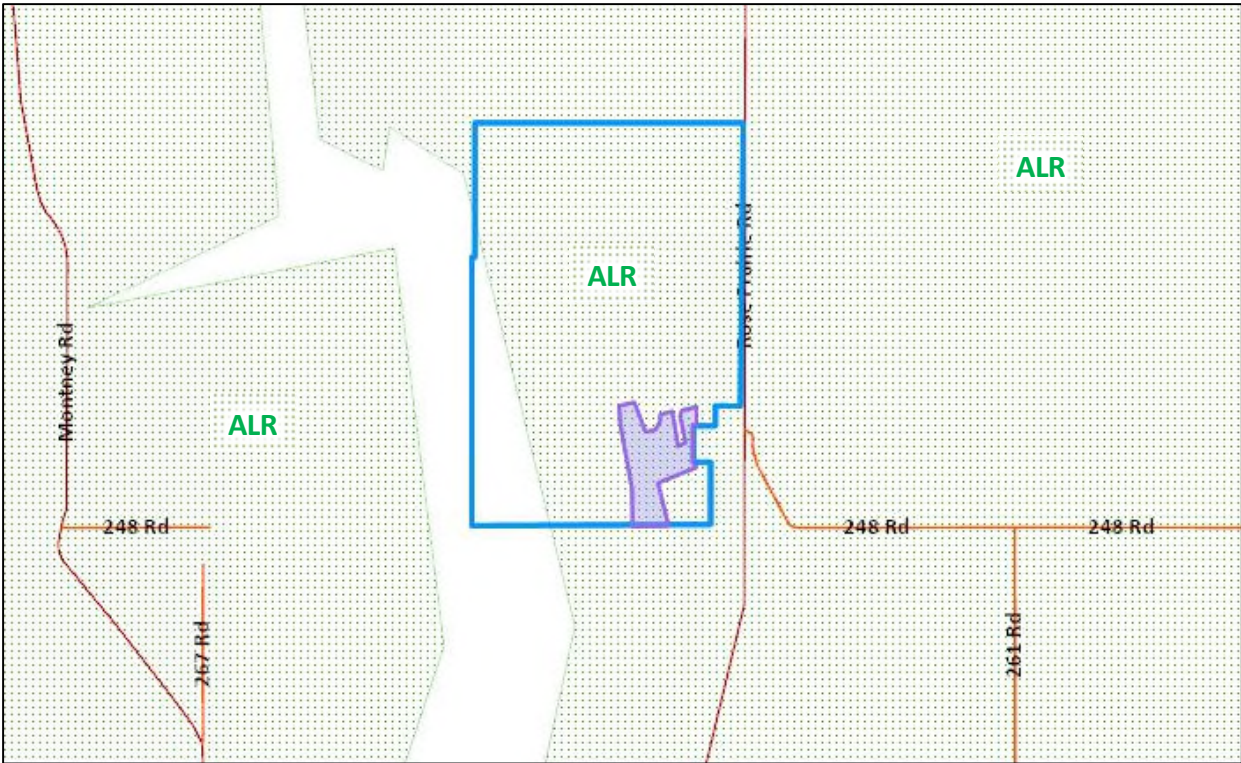
PRRD Rural Official Community Plan Bylaw No. 1940, 2011: Agriculture-Rural



PRRD Zoning Bylaw No. 1000, 1996: Large Agricultural Holdings Zone (A-2)



Agricultural Land Reserve: Within



CLI Soil Classification: 6⁶_T7⁴_{TR}, 3_C, 2⁸_C3²_T, 3⁷_C4³_X

