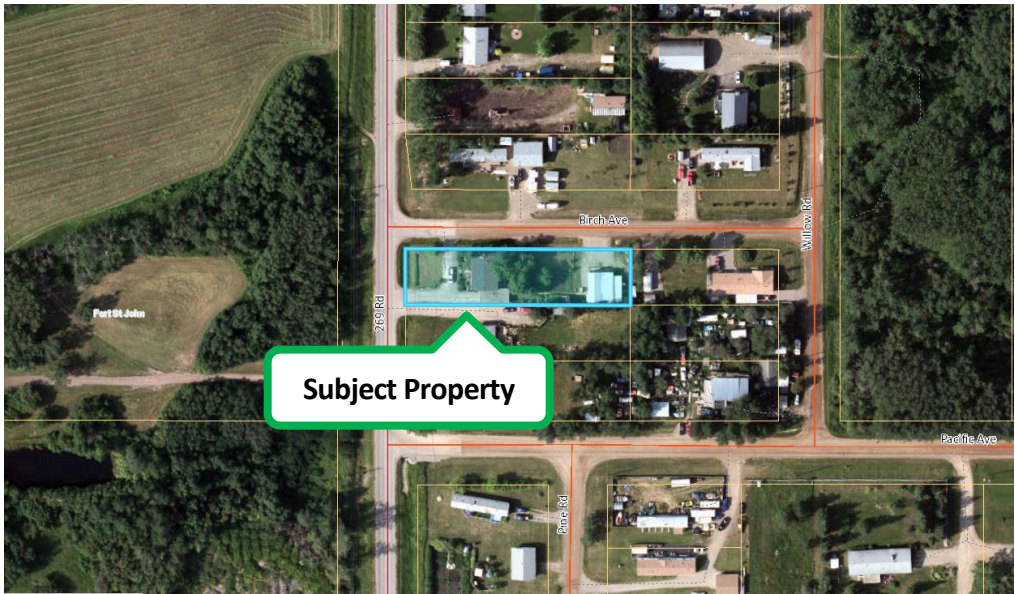


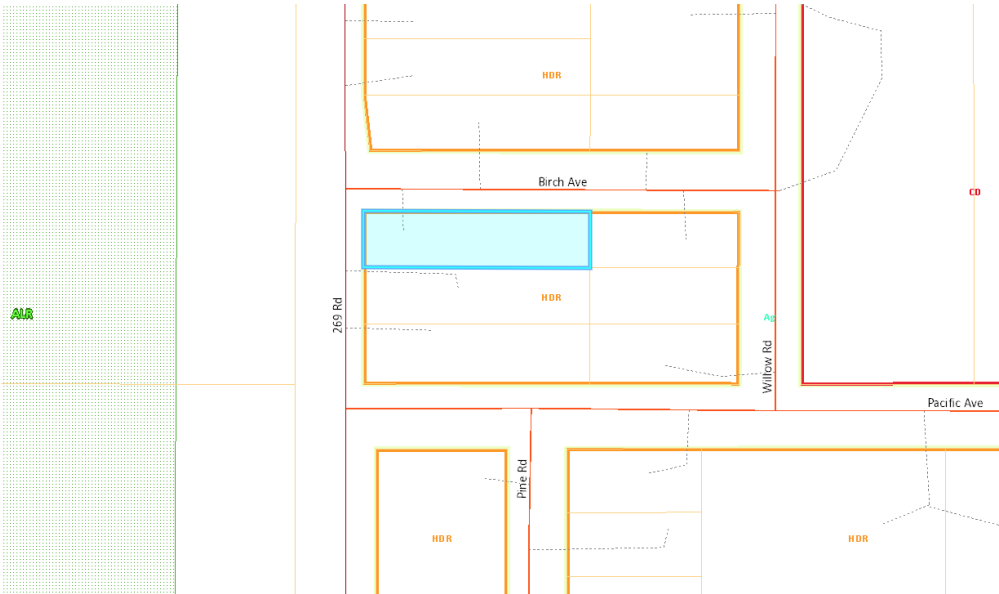
Location: Fort St John area



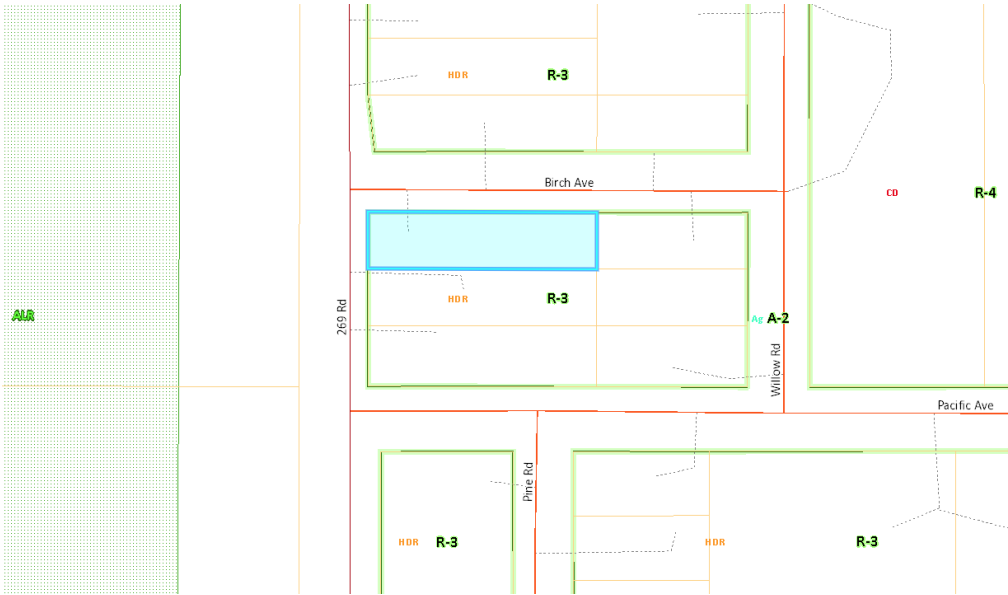
Aerial imagery



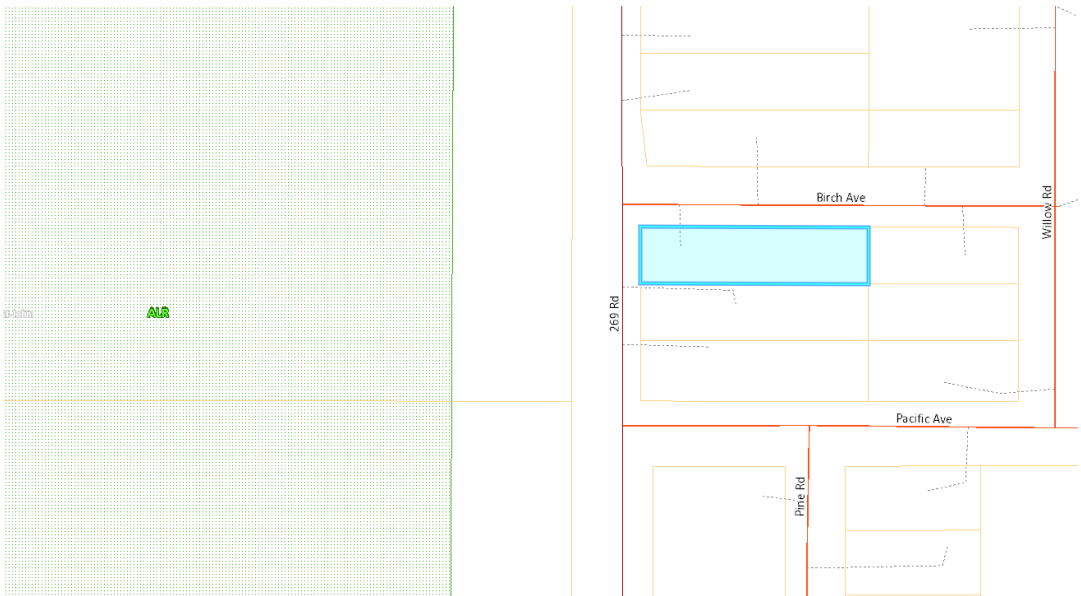
PRRD NPFA Official Community Plan Bylaw No. 1870, 2009: High Density Residential (HDR)



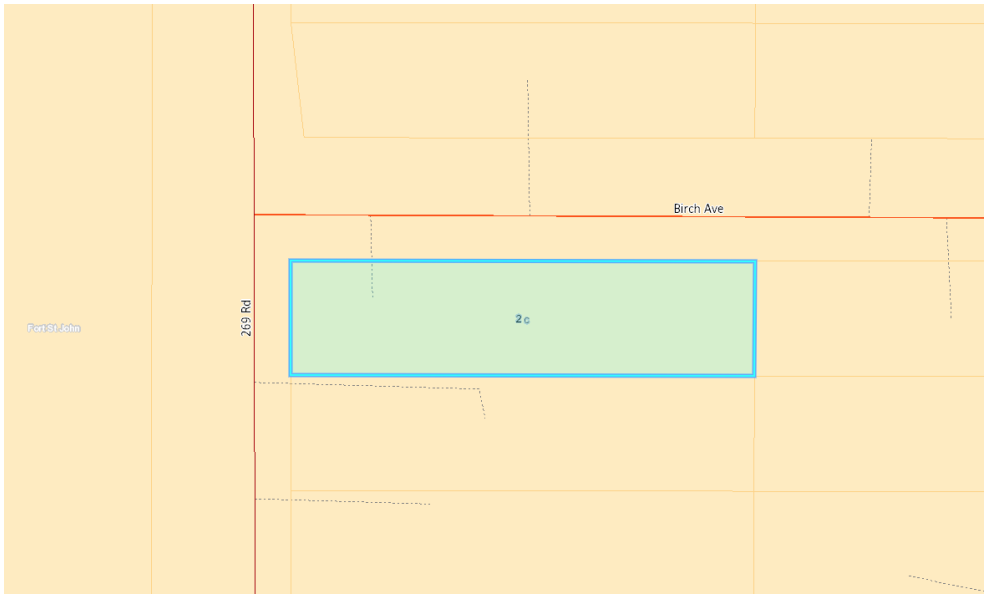
PRRD Zoning Bylaw No. 1343, 2001: Residential 3 Zone (R-3)



Agricultural Land Reserve: Not Within



CLI Soil Classification: 2c



Parcel Lines:

